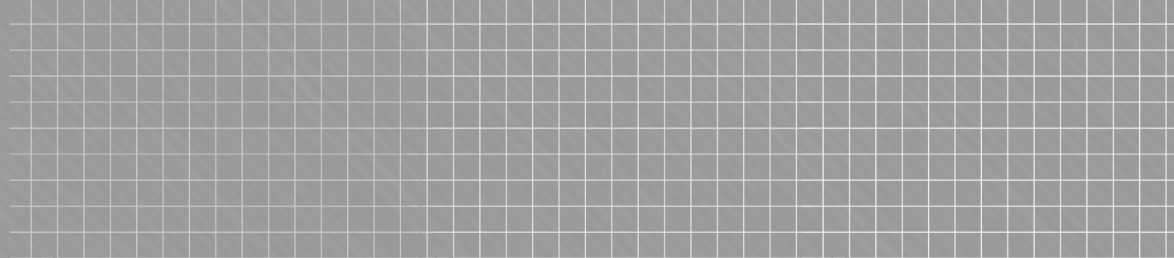




Your Logo





## HYDE LANE, Kinver, DY7 6AE

Offers In Region Of £695,000

4 2 2

- A stunning FOUR / FIVE Bedroom Detached family home.
- Within walking distance of local schools and amenities. Close to transport links.
- Offering plenty of character and charm throughout, with period features.
- Four Bedrooms, an Ensuite and Family Bathroom to the first floor, with a further Bedroom opportunity to be added to the second floor. viewing is advised.
- Prime location within Kinver, close to the Countryside.
- Thoughtfully extended to create a substantial family home, arranged over three floors.
- Dining Room, extended Living Room and Breakfast Kitchen with pantry.
- Very large Rear Garden, close to 1/3 of an acre having a Garage.
- EPC Rating TBC.

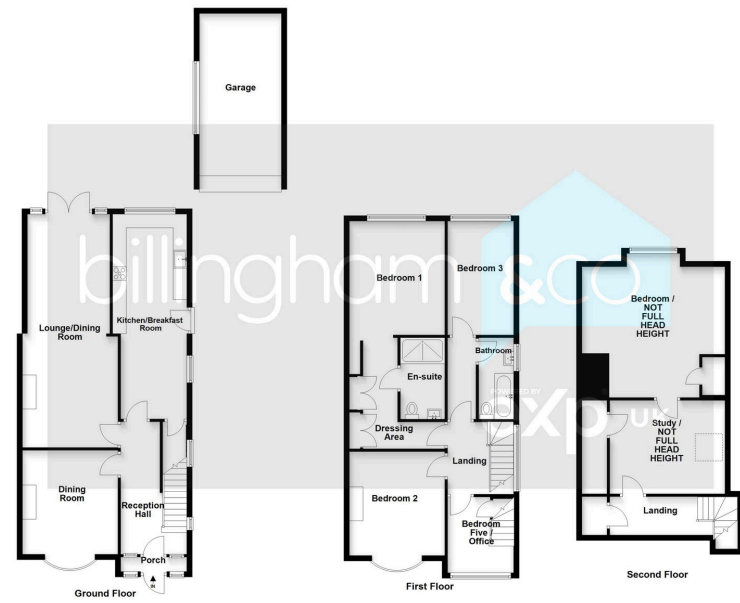


Offering plenty of CHARACTER and CHARM throughout, a RARE OPPORTUNITY to purchase a thoughtfully and substantially extended traditional style DETACHED FAMILY HOME, within a pleasant COUNTRYSIDE setting and a short distance of LOCAL SCHOOLS and the VILLAGE. Having a stunning Reception Hall, Dining Room, an extended Living Room and Kitchen, Three/Four Bedrooms to the First Floor, an Ensuite and a separate Bathroom with a further Bedroom with separate Study to the Second Floor. The property is set within a large plot of roughly 1/3 acres. An early viewing is strongly recommended.









Sales 01384 444 004 / Lettings 01384 445 075

hello@billingham.properties

www.billingham.properties



Agents Note: Whilst every care has been taken to prepare these particulars, they are for guidance purposes only. All measurements are approximate and are for general guidance purposes only and whilst every care has been taken to ensure their accuracy, they should not be relied upon and potential buyers are advised to recheck the measurements.