



Woodland Avenue, QUARRY BANK, DY5 1EQ

Offers In Region Of £180,000

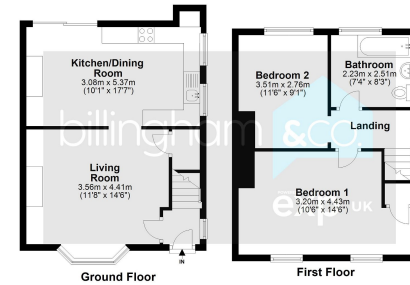
🛏 2 🚿 1 🛋 1

- Well presented TWO BEDROOM semi detached home.
- Rear Garden and off road parking to the front.
- Popular location, close to local amenities.
- An early viewing is advised.
- Spacious LIVING ROOM, modern DINING KITCHEN.
- Thought an ideal purchase for a FTB.
- Having NO UPWARD CHAIN!
- EPC Rating D

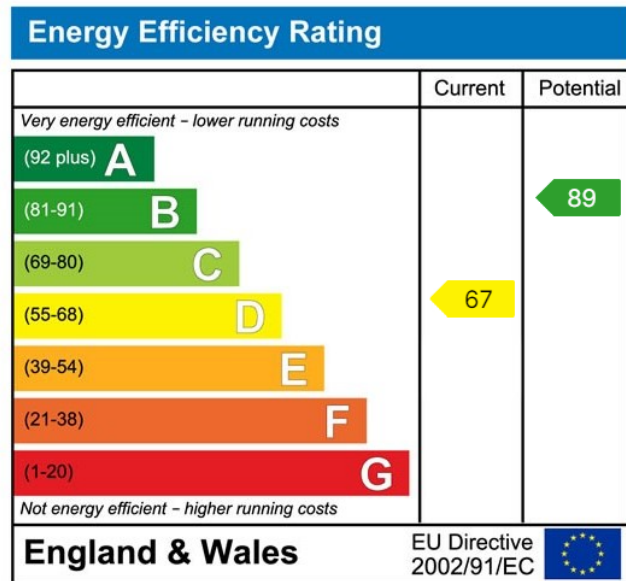


Thought an ideal purchase for a FTB or a young family, this spacious two bedroom semi-detached family home occupies a prominent position within Quarry Bank, close to local amenities. Having a spacious Living Room, a Dining Kitchen, upstairs Bathroom, a long Rear Garden and benefiting from off road parking. Having no upward chain, an early viewing is advised.





18 Woodfield Avenue, Quarry Bank



Sales 01384 444 004 / Lettings 01384 445 075
 hello@billingham.properties
 www.billingham.properties



Agents Note: Whilst every care has been taken to prepare these particulars, they are for guidance purposes only. All measurements are approximate and are for general guidance purposes only and whilst every care has been taken to ensure their accuracy, they should not be relied upon and potential buyers are advised to recheck the measurements.