



# Oakfield Road, Alrewas

£250,000

3 1 2



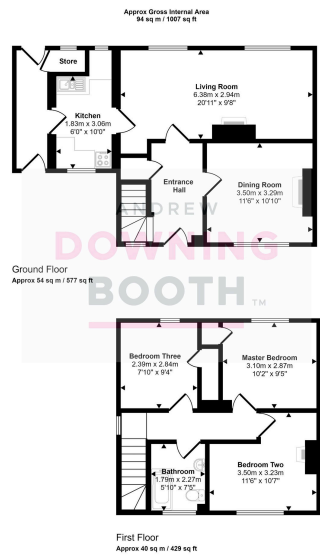
A consistently spacious three double bedroom home in the highly desirable village of Alrewas, with the rare added benefit of having no upward chain. This impressive property in Oakfield Road comes to the market offering exceptional value for money and a truly superb plot.

Sitting just down the road from the centre of this incredibly sought after village, the property benefits from having a wide variety of amenities nearby, including various shops, eateries, scenic walks, highly rated schools and an easy commute to Lichfield and surrounding areas via the A38.

The accommodation is set across two floors, with the ground floor consisting of a through entrance hall, very large living room, separate dining room and kitchen, whilst the floor is home to the three double bedrooms and good size bathroom. A fabulous plot consists of a spacious driveway to the frontage and a magnificent lawned garden to the rear. This property offers potential to be a superb family home, with ample scope to extend, subject to gaining any necessary permissions.

No upward chain, a spectacular plot and a hugely enviable location; this property simply must be viewed in order to be appreciated.





This floorplan is only for illustrative purposes and is not to scale. Measurements of rooms, doors, windows, and any items are approximate and no responsibility is taken for any error, omission or mis-statement. Some of items such as bathroom scales are representations only and may not look like the real items. Made with Made Guppy 360.

- Three Double Bedroom Semi-Detached Property
- No Upward Chain
- Highly Desirable Village Location With Access To Amenities
- Consistently Generous Room Sizes
- Spectacular Plot With Spacious Driveway & Very Large Rear Garden
- Impressive Living Room Plus Separate Dining Room
- EPC Rating:
- Council Tax Band: C

