





# Flinn Close, Boley Park, Lichfield

Offers Over £350,000

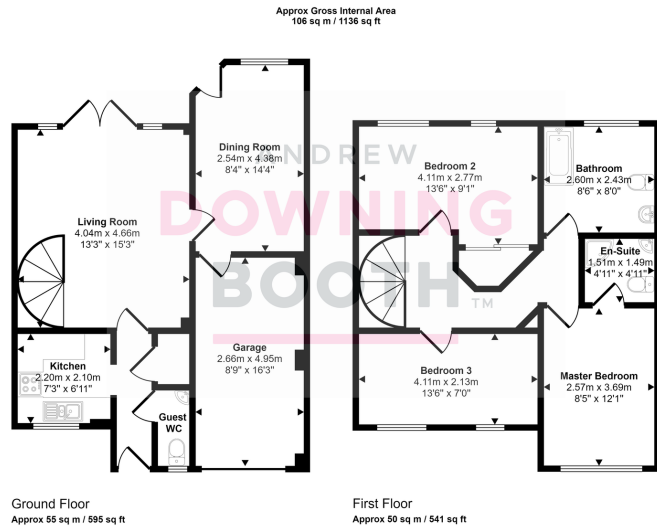
3 2 2





Benefitting from both ground and first floor extensions giving it two large reception rooms and three double bedrooms, and boasting a SOUTH FACING this certainly isn't your every day, run of the mill three bedroom semi! Sitting in the highly desirable Boley Park, this generous home sits on a very good sized and private plot and offers plenty of space for all the family. The accommodation comprises an entrance hall, guest WC, kitchen, large living room and extremely vast, extended dining room. Upstairs are three double bedrooms, en-suite and large, modern bathroom. There is ample parking to the front and a single integral garage, which could be partially converted to turn the dining room into a kitchen diner, replacing the current kitchen with a study (all subject to gaining the necessary building regulations). The property also has the added bonus of the enclosed rear garden being private, with a patio and being laid mainly to lawn. This property really is far more spacious than it looks, so don't judge a book by it's cover and book in your viewing today!





This floorplan is only for illustrative purposes and is not to scale. Measurements of rooms, doors, windows, and any items are approximate and no responsibility is taken for any error, omission or mis-statement. Icons of items such as bathroom suites are representations only and may not look like the real items. Made with Made Snappy 360.

- Extended Three Double Bedroom Semi-Detached Home
- Guest WC, En-suite & Large Bathroom
- Spacious Living Room
- King Edward VI High School Catchment
- Kitchen & Vast Dining Room
- Garage, Driveway & Rear Garden

