



BRIAN MORAN POWERED BY exp <sup>TM</sup> UK

@ [brian.moran@exp.uk.com](mailto:brian.moran@exp.uk.com)

🌐 [brian.moran.exp.uk.com](http://brian.moran.exp.uk.com)

☎ 07939 055 524



# 64 Robert Avenue

Offers Over £600,000

🛏️ 2 🪑 1 🚗 1

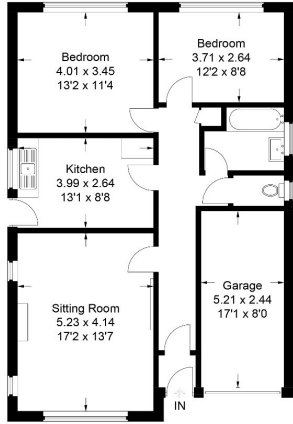




Situated in the South side of St. Albans in St. Stephens Parish. The town centre is just over a 1 mile away and the M1 and M25 are close by for those that need to commute by car.



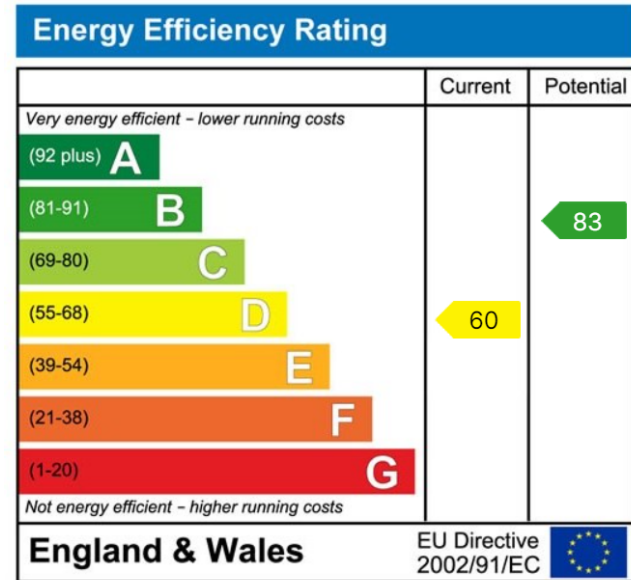
Approximate Gross Internal Area  
 75.9 sq m / 817 sq ft  
 Garage = 12.7 sq m / 137 sq ft  
 Total = 88.6 sq m / 954 sq ft



**Ground Floor**

This plan is for layout guidance only. Not drawn to scale unless stated. Windows and door openings are approximate. Whilst every care is taken in the preparation of this plan, please check all dimensions, shapes and compass bearings before making any decisions reliant upon them.  
 © CJ Property Marketing Ltd Produced for Boudicas

- Potential to extend (STPP)
- Chain free
- Two bedrooms
- Generous plot
- New boiler
- Cavity wall insulation
- Off road parking
- Garage
- Good motorway links
- QUOTE BM0221 TO VIEW



eXp World UK Ltd is a registered company at Level 37, 25 Canada Square, London, E14 5LQ.

Registered company number is 12016573. VAT Registration Number is 327 4120 29