



Fellows Avenue

WALL HEATH

£285,000



Three Bedroom Semi-Detached House

Features.

- THREE BEDROOMS
- MODERN KITCHEN/DINER
- LOUNGE WITH LOG BURNER
- FAMILY BATHROOM WITH SHOWER OVER BATH
- LARGE GARDEN
- GARAGE WITH STORAGE FACILITIES
- BLOCKED PAVED DRIVEWAY

Description.

A well presented three bedroom semi-detached house, offered with modern kitchen/diner, lounge, garage with storage facilities, rear garden and blocked paved way, situated in the sought-after village of Wall Heath, Kingswinford.

The property is approached via a block paved driveway providing off road parking for two vehicles.

A secure porch leads directly into the reception hallway with doors radiating off to; the lounge featuring a log burner; modern kitchen/diner; the garage with storage facilities.

Stairs from the hallway lead up to the first floor landing off to; the master bedroom with built-in wardrobes; double bedroom two; bedroom three; and the family bathroom with shower over bath.

Outside, the property enjoys an attractive, and good-sized rear garden with well-stocked beds to fenced boundaries.

The property is conveniently located within the sought-after village of Wall Heath, offering a number of local amenities, whilst being within easy reach of Kingswinford offering a range of eateries, supermarkets, as well as doctors, dentists and professional services. In addition, there are nearby schools, plus the further amenities, shops, schools and colleges in the larger town of Stourbridge and the surrounding areas.



Room Dimensions.

Room Dimensions:

Porch

Hall

Lounge: 11' 10" x 10' 11" (3.62m x 3.35m)

Kitchen/Diner: 17' 8" x 10' 9" (5.40m x 3.30m)

Garage: 16' 8" x 10' 5" (5.10m x 3.20m)

Laundry Room: 6' 10" x 4' 3" (2.10m x 1.32m)

Stairs To First Floor Landing

Master Bedroom: 11' 7" x 11' 7" (3.55m x 3.55m) max

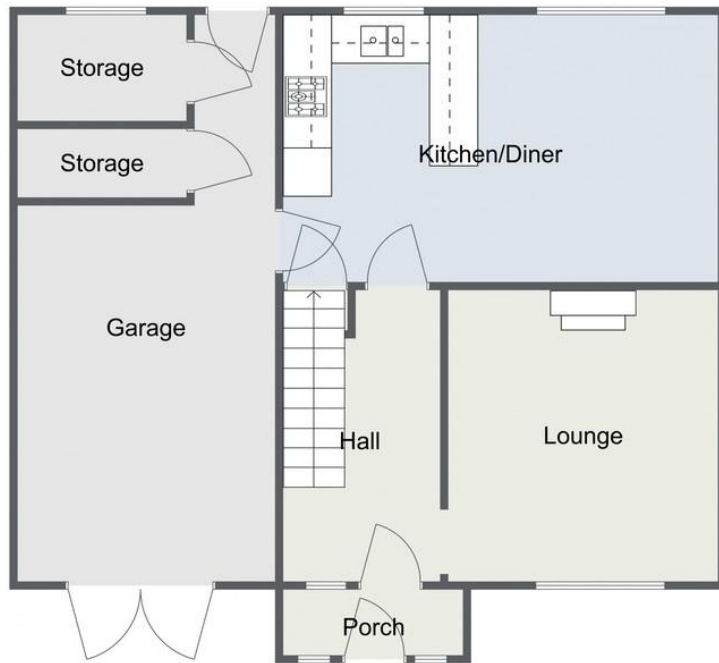
Bedroom Two: 11' 7" x 10' 1" (3.55m x 3.08m)

Bedroom Three: 7' 11" x 7' 4" (2.42m x 2.25m)

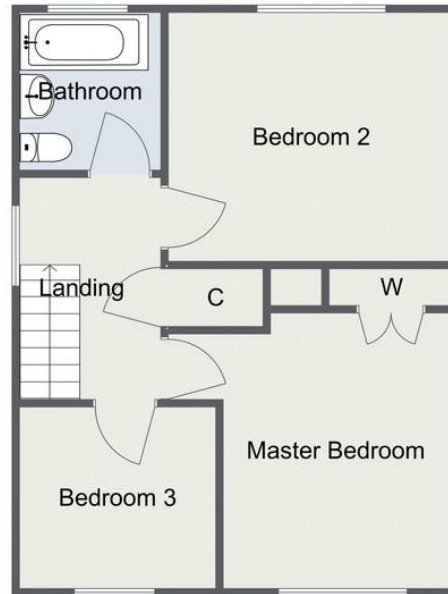
Bathroom: 6' 4" x 5' 8" (1.95m x 1.75m)



Fellows Avenue, Wall Heath
Ground Floor



First Floor



Total Area Approx:
101.9 sq metres (1096 sq ft)

For illustrative purposes only. Decorative finishes, fixtures & fittings do not represent the current state of the property. Measurements are approximate & not to scale. Floor Plans made using RoomSketcher.

EPC: D

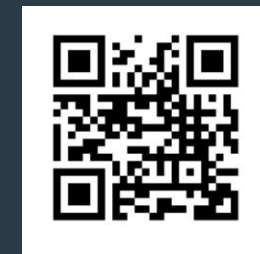
COUNCIL TAX BAND: C

TENURE: Freehold

.....
For more information on this house or to arrange a viewing please call the Bromsgrove office on:

01527 872 479

.....
Alternatively, you can scan below to view all of the details of this property online.



Please read the following: These particulars are for general guidance only and are based on information supplied and approved by the seller. Complete accuracy cannot be guaranteed and may be subject to errors and/or omissions. They do not constitute a contract or part of a contract in any way. We are not surveyors or conveyancing experts therefore we cannot and do not comment on the condition, issues relating to title or other legal issues that may affect this property. Interested parties should employ their own professionals to make enquiries before carrying out any transactional decisions. Photographs are provided for illustrative purposes only and the items shown in these are not necessarily included in the sale, unless specifically stated. The mention of any fixtures, fittings and/or appliances does not imply that they are in full efficient working order and they have not been tested. All dimensions are approximate. We are not liable for any loss arising from the use of these details.

.....
14 Old Birmingham Road
Lickey End
Bromsgrove
B60 1DE