



RAPHAEL AGBANDJE POWERED BY **exp** <sup>TM</sup> UK

@ raphael.agbandje@exp.uk.com

🌐 raphaelagbandje.exp.uk.com

☎ 0203 488 5876

## Miles Close, West Thamesmead, London SE28 0NJ

£425,000

🛏️ 2 🚿 2 🚗 1

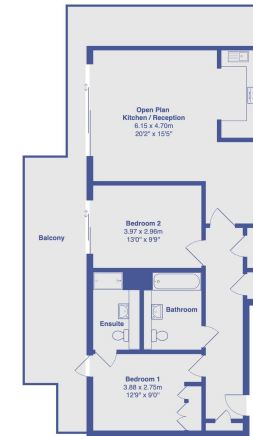
- Penthouse Apartment
- Chain Free
- Two Bedrooms
- Two Bathrooms (1 En-suite)
- Immaculate internal Condition
- Fully Integrated Modern Kitchen
- Allocated Secure Parking
- Close to Amenities and Transport of Woolwich



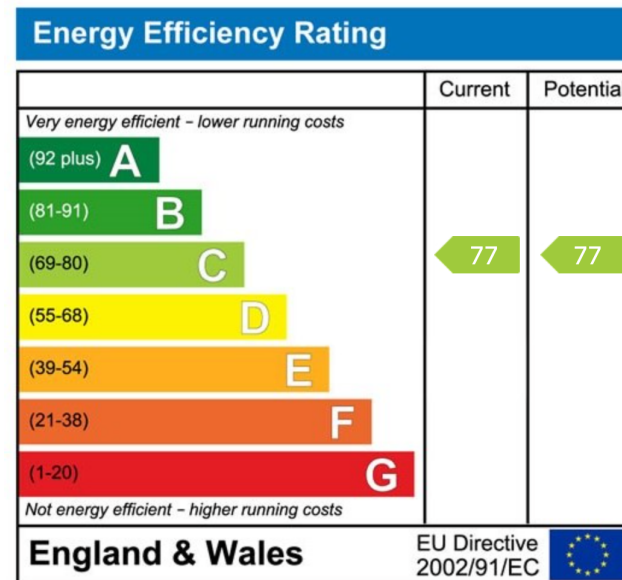
Situated within a contemporary gated development, just a short distance from Woolwich's vibrant centre, offered to the market chain free this rarely available Penthouse apartment offers stunning panoramic views of London and the River Thames. Spanning over 800 sq ft, the property features two bedrooms and two bathrooms, with the main bedroom boasting an en-suite and built-in wardrobes. Within moments of the residence, you can access the Thames path, providing delightful riverwalks leading all the way to Greenwich Peninsula. Additionally, you can enjoy the expansive green spaces of Gallions Reach Park, and the popular Discovery Primary School is conveniently located nearby.

The heart of Woolwich is slightly over a mile away, offering a variety of shops, bars, and restaurants. Transportation options abound, with easy access to the Elizabeth Line, national rail, and DLR. For a unique travel experience, the Thames Clipper is also available from this location.





Miles Close, Thamesmead, SE28 0NJ  
 Total Area: 75.7 m<sup>2</sup> ... 815 ft<sup>2</sup> (excluding balcony)  
 All measurements are approximate and for display purposes only



eXp World UK Ltd is a registered company at Level 37, 25 Canada Square, London, E14 5LQ.  
 Registered company number is 12016573. VAT Registration Number is 327 4120 29