



RAPHAEL AGBANDJE POWERED BY **exp** TM UK

@ raphael.agbandje@exp.uk.com

🌐 raphaelagbandje.exp.uk.com

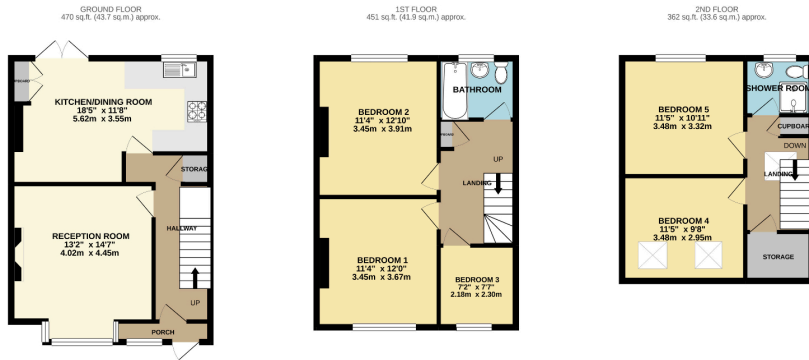
☎ 0203 488 5876

Pegwell Street, Plumstead, London SE18 2SP

POA

5 2 2





TOTAL FLOOR AREA: 1310sq ft. (121.7 sq m.) approx.
 Whilst every attempt has been made to ensure the accuracy of the floorplan contained herein, measurements of doors, windows, rooms, and any other items are approximate and no responsibility is taken for any error, omission or misstatement. This plan is for illustrative purposes only and should be used as such by any prospective purchaser. The services, systems and appliances shown have not been tested and no guarantee is given as to their operability or efficiency at the time.
 Made with Metrepro 10/2011



****Property Reference: RA0083**** Situated on one of Plumsteads most popular locations a short distance to the common is this well presented and deceptively spacious five bedroom family home. Boasting much elegance and charm throughout the property has been extended to provide an approximate 1300 sq ft of living space over three floors. You enter the ground floor where you greeted by the front reception room which boasts feature marble fireplace, stripped wooden flooring and large bay window which fills this room with natural light. The rear of the property has been opened up to create a true heart to the home a beautiful kitchen/diner with handmade kitchen with spaces for all appliances, patio doors lead out onto a landscaped rear garden with smartly decked patio area.

