
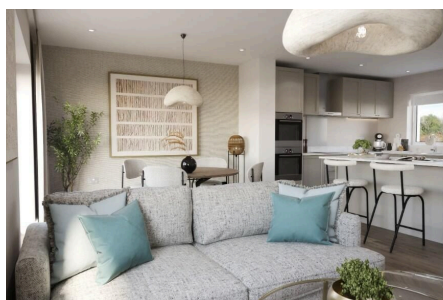


Cross Farm, Plot 2, The Catcott,

£425,000

 2  2  0



Plot 2 is a beautiful 2 double-bedroom semi-detached house. Featuring an open-plan kitchen/living/dining area with large full-sized sliding doors leading out onto the west-facing garden.



Key Features

- 2 double bedrooms
- En suite to each bedroom
- Solar PV panels
- Sliding doors leading to west-facing garden
- 10 year warranty
- Contemporary kitchen with Caesarstone worktops and integrated appliances
- 2 Allocated off-street car parking spaces with EV charging point
- Open-plan living
- Short walking distance to local amenities
- Part of an exclusive development of just 9 homes

The Catcott

2 BEDROOM SEMI-DETACHED
86.3 SQM (918 SQFT)
PLOTS: 2 & 3



GROUND FLOOR

KITCHEN 3.3M X 3.2M (10'9" X 10'6")
LIVING/DINING 6.8M X 3.6M (22'3" X 11'10")



FIRST FLOOR

BEDROOM 1 4.2M X 3.5M (13'9" X 11'6")
BEDROOM 2 3.6M X 3.2M (11'10" X 10'6")



HOUSE TYPE B

A Air Source Heat Pump Infrastructure ASHP Air Source Heat Pump BS Bin Store Plot 3 is handed and window variation differs from shown.

13

