

## Stonewell Park Road, Congresbury

Guide Price £360,000

3 1 2

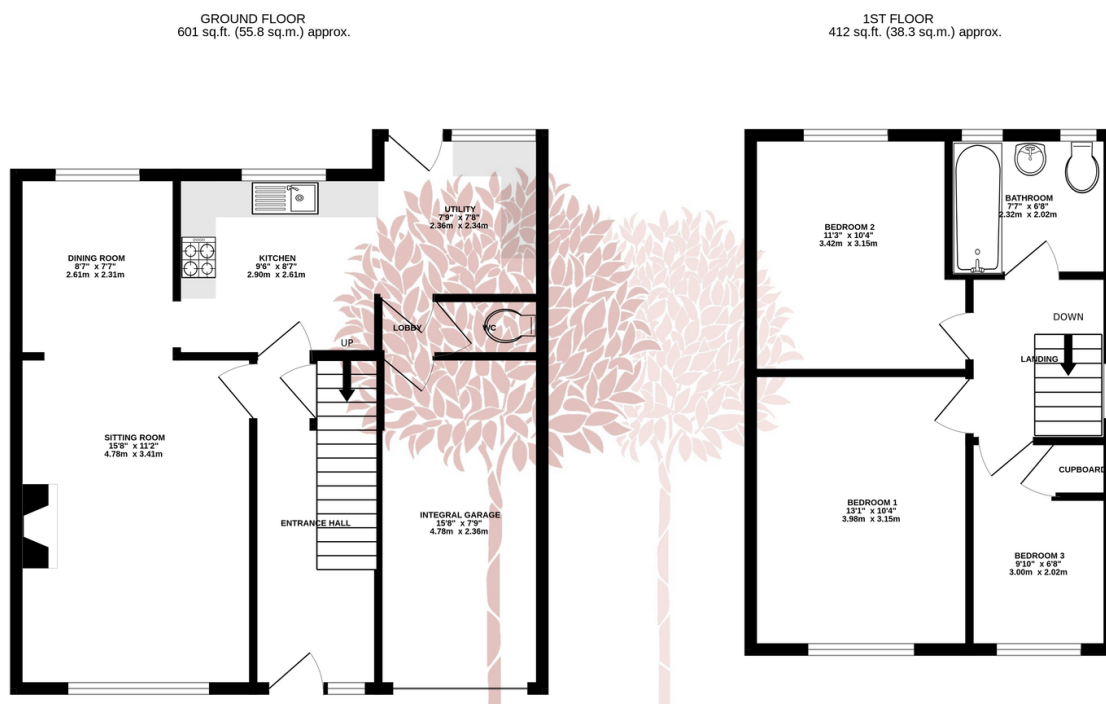


**SUPERBLY PRESENTED** - This three bedroom semi-detached house has a high spec kitchen, bathroom and sitting room with wood burner and separate dining room. All with fabulous unspoilt views over the playing fields. EPC rating D.



## Key Features

- Three bedroom semi detached house
- Fantastic condition
- Open plan lounge/diner
- Gas central heating and double glazing
- Single garage and driveway
- Family bathroom and downstairs cloakroom
- Extended kitchen/utility
- Log burning stove
- Further scope to extend (subject to planning)
- EPC D



TOTAL FLOOR AREA: 1012 sq.ft. (94.1 sq.m.) approx.

Whilst every attempt has been made to ensure the accuracy of the floorplan contained here, measurements of doors, windows, rooms and any other items are approximate and no responsibility is taken for any error, omission or mis-statement. This plan is for illustrative purposes only and should be used as such by any prospective purchaser. The services, systems and appliances shown have not been tested and no guarantee as to their operability or efficiency can be given.

Made with Metropix ©2024

