




# debbie fortune

ESTATE AGENTS

## Furnace Way, Congresbury

£575,000

 4  2  2



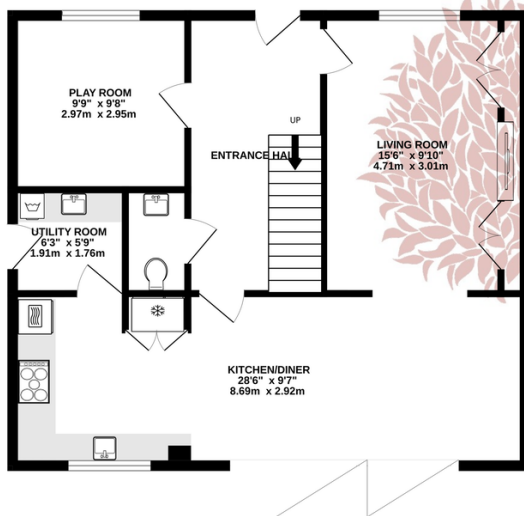
A stylish and beautifully presented detached family home situated within the acclaimed Cadbury Fields development in Congresbury. This four bedroom home has a lovely south facing garden, double garage, spacious sitting room with bespoke wall cabinets, kitchen/dining room, utility room, two well-appointed bathrooms and a fantastic separate family room.



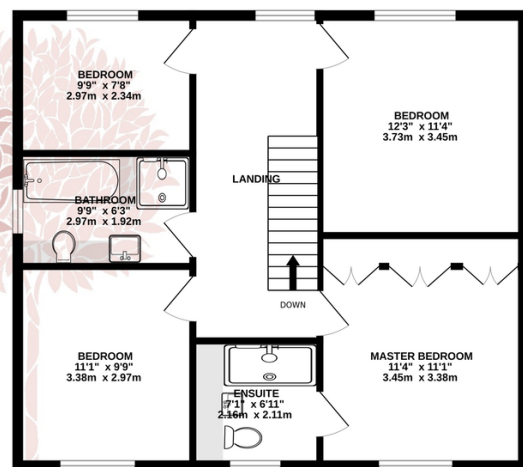
## Key Features

- Superb four bedroom detached family home
- Off street parking plus double garage
- Stylish sitting room with bespoke wall cabinets and shelving and separate family room
- Utility, ground floor cloakroom, and first floor airing cupboard
- EPC rating A
- Highly desirable modern development
- Landscaped south facing rear garden
- Outstanding kitchen/dining room with quality appliances and fixtures, two well appointed bathrooms
- Remainder of a 10 Year Premier Guarantee
- Council Tax Band F

GROUND FLOOR  
712 sq.ft. (66.2 sq.m.) approx.



1ST FLOOR  
704 sq.ft. (65.4 sq.m.) approx.



TOTAL FLOOR AREA: 1416 sq.ft. (131.6 sq.m.) approx.

Whilst every attempt has been made to ensure the accuracy of the floorplan contained here, measurements of doors, windows, rooms and any other items are approximate and no responsibility is taken for any error, omission or mis-statement. This plan is for illustrative purposes only and should be used as such by any prospective purchaser. The services, systems and appliances shown have not been tested and no guarantee as to their operability or efficiency can be given.

Made with Metropix ©2024

