




# debbie fortune

ESTATE AGENTS

## Cliff Road, Weston-super-Mare

£585,000

 4  3  3

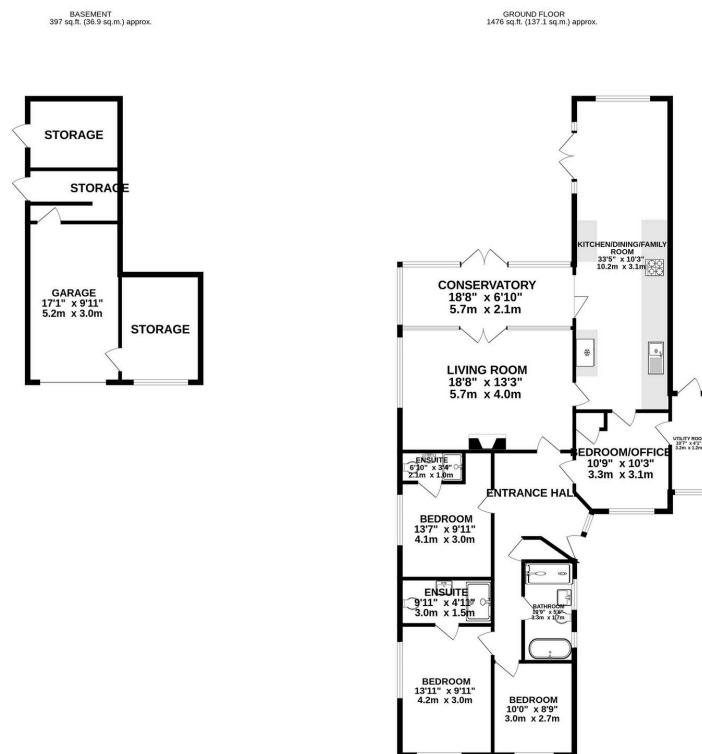


**A TRULY REFINED, STYLISH, AND METICULOUSLY RENOVATED, DETACHED MODERN HOME SOLD WITH NO ONWARD CHAIN. Situated in a hugely popular hillside location in Worlebury, enjoying exceptional coastal views from the generous rear garden.**



## Key Features

- Beautifully appointed three/four bedroom detached home
- Desirable Hillside position enjoying stunning views from the garden
- Meticulously renovated and improved including new flush fit windows & doors to the main house (excluding conservatory)
- Integral garage, plenty of off street parking, and large undercroft storage
- Superb 30kwh energy friendly boiler, plus new boiler and pressurised hot water system
- Generous rear garden with stunning views towards the Severn Estuary
- Three/Four bedrooms and three contemporary bathrooms
- Wonderful interior design throughout with quality fixtures and fittings
- No onward chain
- EPC Pending



TOTAL FLOOR AREA - 1872 sq ft. (174.0 sq.m.) approx.  
 Whilst every attempt has been made to ensure the accuracy of the figures contained here, measurements of doors, windows, rooms and any other items are approximate and no responsibility is taken for any error, omission or mis-statement. This plan is for illustrative purposes only and should be used as such by any prospective purchaser. The services, systems and appliances shown have not been tested and no guarantee as to their quantity or efficiency can be given.  
 Made with Metropix (2024)

