

Woodbine Cottage, Burrington

£680,000

🛏 4 🍽 2 🛋 2

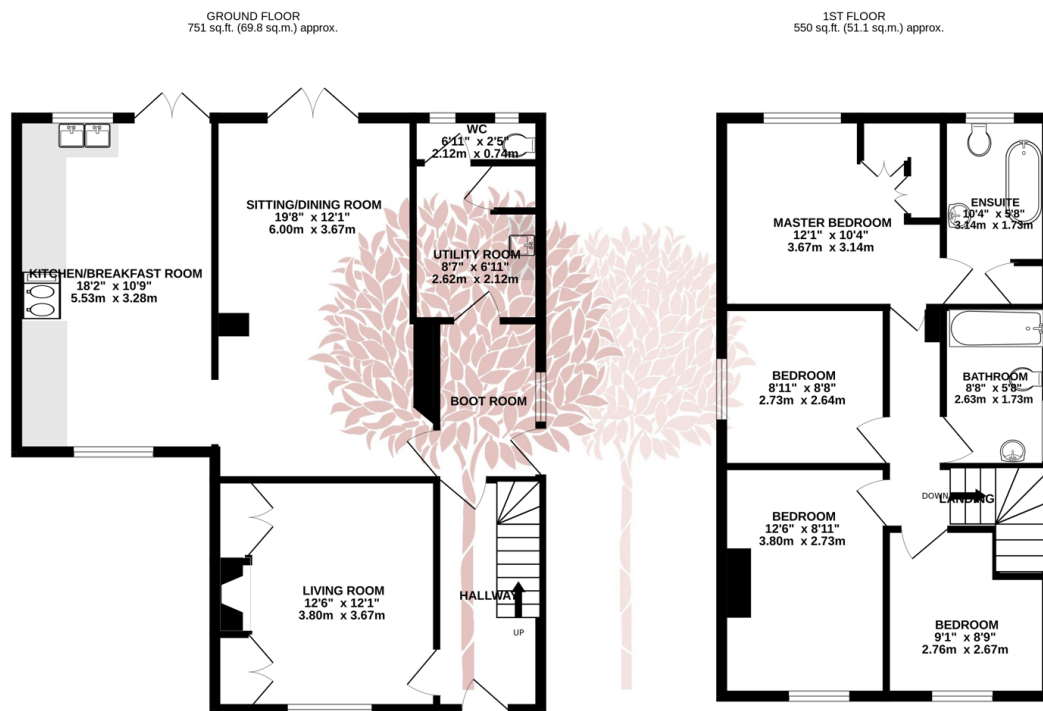


A superb four bedroom detached period cottage situated within the highly desirable Mendip village Burrington. This charming family home is blessed with a superb rear garden that backs onto open fields, several outbuildings, a fantastic versatile footprint and no onward chain.



Key Features

- Beautiful detached character cottage
- Extended ground floor accommodation with sitting room, living/dining room and kitchen/breakfast room
- Single garage and plenty of off street parking
- Plenty of future potential (subject to the necessary consents)
- Energy Efficiency Rating E
- Four bedrooms and two stylish bathrooms
- Handy boot room, utility room and cloakroom
- Stunning rear garden backing onto open fields with breath-taking views
- No onward chain
- Viewing Advised



TOTAL FLOOR AREA: 1302 sq.ft. (120.9 sq.m.) approx.

Whilst every attempt has been made to ensure the accuracy of the floorplan contained here, measurements of doors, windows, rooms and any other items are approximate and no responsibility is taken for any error, omission or mis-statement. This plan is for illustrative purposes only and should be used as such by any prospective purchaser. The services, systems and appliances shown have not been tested and no guarantee as to their operability or efficiency can be given.

Made with Metropix ©2024

