

Park Road, Congresbury

£375,000

🛏 3 🚗 1 🛋 2

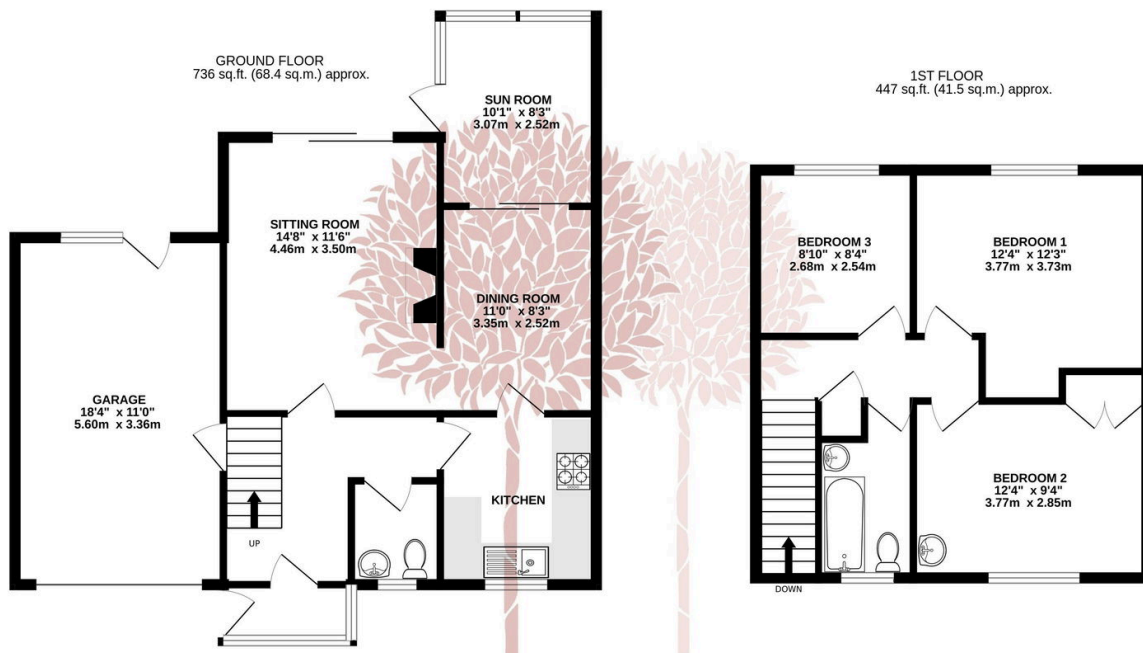


NO ONWARD CHAIN - A three bedroom semi-detached home situated on a popular road with a south facing rear garden, garage and off road parking.



Key Features

- Semi-detached family house
- South facing rear garden
- Off street parking and garage
- Short walk to village amenities
- Potential to extend (subject to planning permission)
- Offered with no onward.
- Large front garden (with potential to create more parking)
-
-



TOTAL FLOOR AREA : 1183 sq.ft. (109.9 sq.m.) approx.

Whilst every attempt has been made to ensure the accuracy of the floorplan contained here, measurements of doors, windows, rooms and any other items are approximate and no responsibility is taken for any error, omission or mis-statement. This plan is for illustrative purposes only and should be used as such by any prospective purchaser. The services, systems and appliances shown have not been tested and no guarantee as to their operability or efficiency can be given.

Made with Metropix ©2024

