

## Hillview Gardens, Felton

£450,000

🛏 4 🚿 2 🚲 1



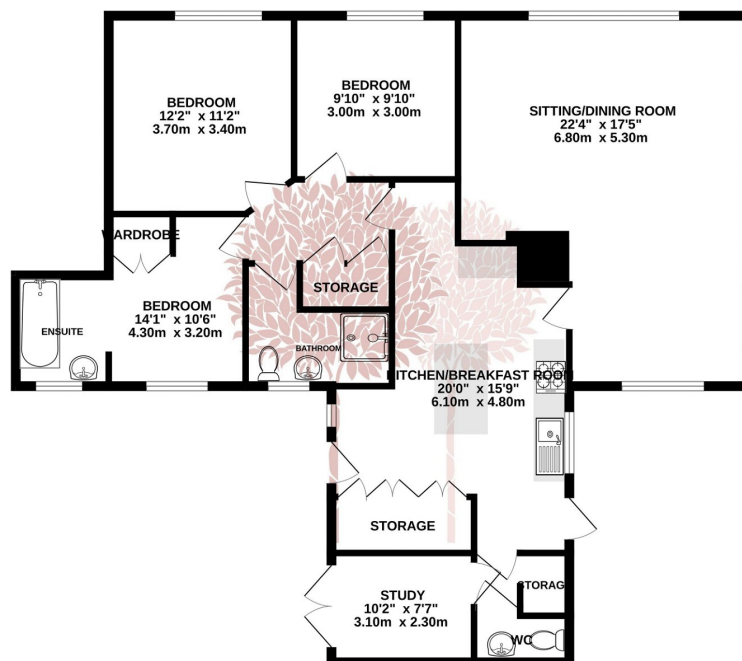
**DETACHED BUNGALOW** Well positioned detached bungalow, in a village location offers tremendously flexible accommodation and is incredibly well presented throughout. The property is sat in a well-proportioned plot which offers wonderful countryside views at the rear.



## Key Features

- 3/4 bedroom detached bungalow
- Occupying a superb position with far reaching countryside views
- Versatile living accommodation
- Ample off street parking
- Wrap around gardens
- Countryside walks on the doorstep
- Great for commuting to Bristol
- EPC C
- Council Tax Band D

GROUND FLOOR  
1123 sq.ft. (104.3 sq.m.) approx.



TOTAL FLOOR AREA: 1123 sq.ft. (104.3 sq.m.) approx.

Whilst every effort has been made to ensure the accuracy of the floorplan contained here, measurements of doors, windows, rooms and any other items are approximate and no responsibility is taken for any error, omission or mis-statement. This plan is for illustrative purposes only and should be used as such by any prospective purchaser. The services, systems and appliances shown have not been tested and no guarantee as to their operability or efficiency can be given.  
Made with Metropix ©2024

