




## Puxton Road, Hewish

Guide Price £650,000

 3  2  5



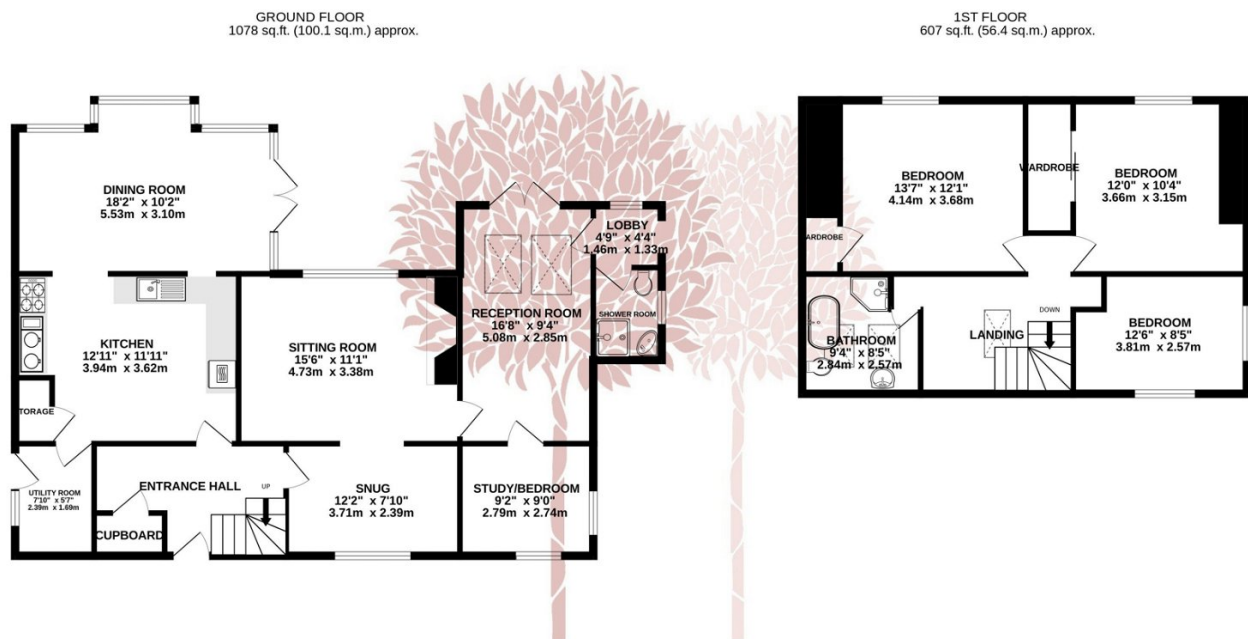
**SUCH A SPACIOUS CHARACTER COTTAGE** If you are looking for a quintessential character cottage with light flooded, spacious rooms, look no further!

Nestled within the charming village of Puxton, on the northern fringes of the Mendip Hills, lies a delightful, detached cottage steeped in history, dating back two centuries. This captivating property has gracefully evolved over time, embracing the passage of years with charm, and now stands as a beautifully presented family haven, seamlessly merging the allure of yesteryears with contemporary comforts, including income generating solar panels.



## Key Features

- Stunning spacious cottage
- 5 reception rooms
- Potential to extend (subject to necessary planning)
- South facing garden
- Semi rural position
- Detached double garage/workshop
- 3 double bedrooms
- Chain free
- lovely views
- Income generating Solar panels



TOTAL FLOOR AREA: 1685 sq.ft. (156.5 sq.m.) approx.

Whilst every attempt has been made to ensure the accuracy of the floorplan contained here, measurements of doors, windows, rooms and any other items are approximate and no responsibility is taken for any error, omission or mis-statement. This plan is for illustrative purposes only and should be used as such by any prospective purchaser. The services, systems and appliances shown have not been tested and no guarantee as to their operability or efficiency can be given.  
Made with Metropix ©2024

