

Potters View, Congresbury

Guide Price £565,000

4 2 1

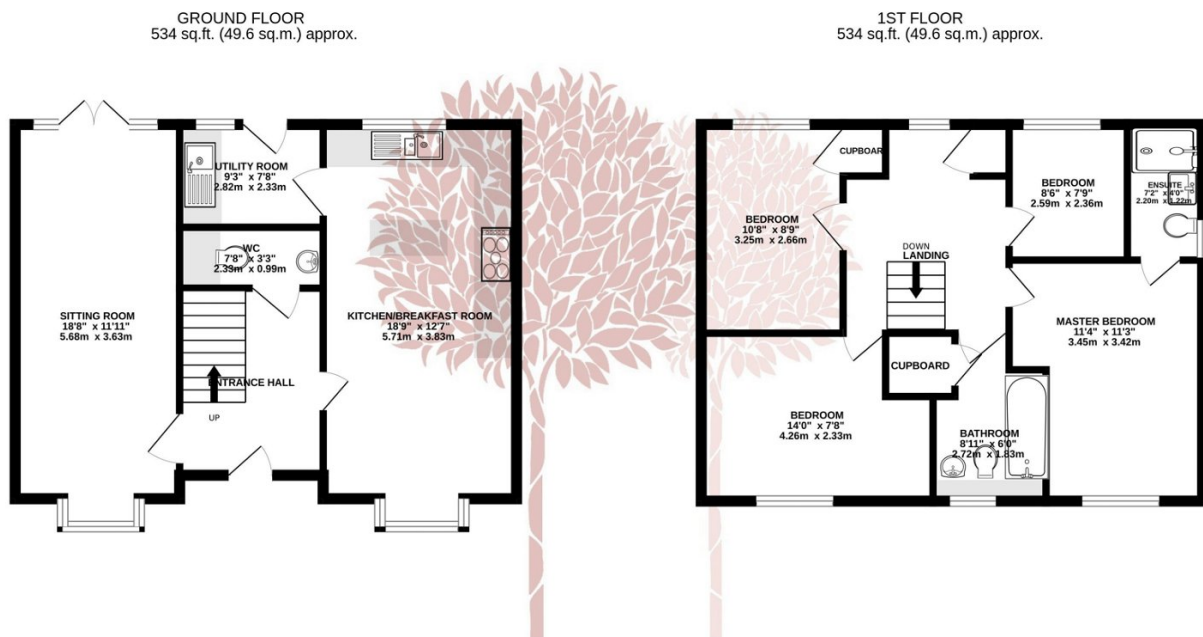


A superb four-bedroom detached house, situated on Potters View, an exclusive cul de sac of just a small number of beautiful new build homes constructed in 2019 by Strongvox Homes. EPC rating B.



Key Features

- Beautifully presented detached four-bedroom family home
- Huge double garage/workshop and driveway parking for four cars
- Superb kitchen/breakfast room with integrated appliances
- Ground floor cloakroom and separate utility
- Immaculate condition
- Exclusive cul de sac position
- Contemporary family bathroom and ensuite
- Dual aspect sitting room with French door to the garden
- Lovely private garden with patio and established flower beds
- EPC rating B



TOTAL FLOOR AREA : 1068 sq.ft. (99.2 sq.m.) approx.

Whilst every attempt has been made to ensure the accuracy of the floorplan contained here, measurements of doors, windows, rooms and any other items are approximate and no responsibility is taken for any error, omission or mis-statement. This plan is for illustrative purposes only and should be used as such by any prospective purchaser. The services, systems and appliances shown have not been tested and no guarantee as to their operability or efficiency can be given.
Made with Metropix ©2024

