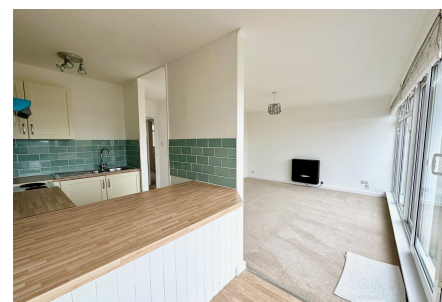


Somerset Square, Nailsea

£179,950

🛏 1 🚿 1 🚗 1



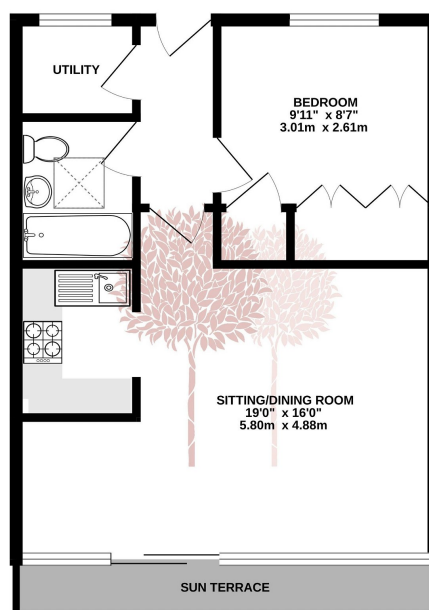
RECENTLY RENOVATED - A newly refurbished one bedroom flat in the centre of Nailsea. Perfect for first time buyers and investors.



Key Features

- Beautifully presented flat
- Newly renovated
- Allocated parking
- Open plan living space
- EPC E
- Open plan accommodation
- South facing sun terrace
- Central town location
- Council Tax Band A
- No Chain

GROUND FLOOR
468 sq.ft. (43.5 sq.m.) approx.



TOTAL FLOOR AREA - 468 sq.ft. (43.5 sq.m.) approx.

Whilst every attempt has been made to ensure the accuracy of the description contained here, measurements of doors, windows, rooms and any other items are approximate and no responsibility is taken for any error, omission or misstatement. This plan is for illustrative purposes only and should be used as such by any prospective purchaser. The services, systems and appliances shown have not been tested and no guarantee as to their operability or efficiency can be given.
Made with Metropex C0204

