

Ridgeway Close, West Harptree

£425,000

3 1 3

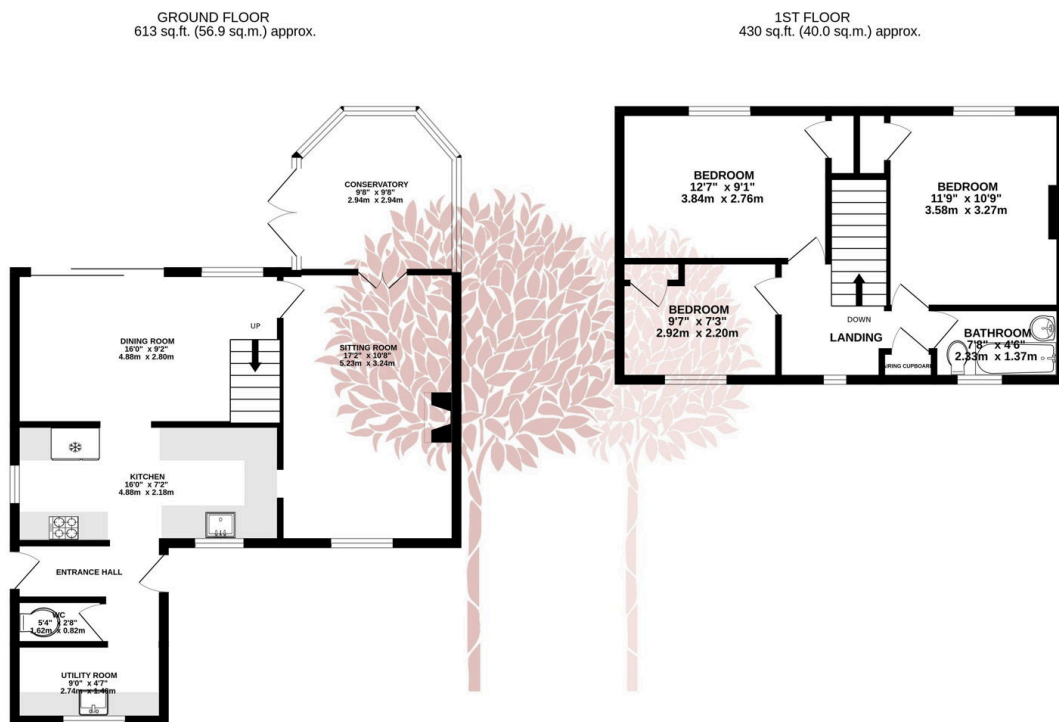


IMPRESSIVE THREE BEDROOM HOUSE IN WEST HARPTREE - This delightful three bedroom home comes to the market with a wonderful layout and décor throughout. The property is deceptively spacious, offering generously sized reception rooms and very good sized bedrooms to match! EPC rating C



Key Features

- Three bedroom semi-detached home
- Large sitting room with log burner
- Stunning countryside views
- Beautiful gardens with vegetable patch to the front
- Off street parking for multiple cars
- Two reception rooms, plus conservatory
- Well presented kitchen and separate utility room
- Modern family bathroom
- Solar Panels
- EPC rating C



TOTAL FLOOR AREA: 1043 sq.ft. (96.9 sq.m.) approx.

Whilst every attempt has been made to ensure the accuracy of the floorplan contained here, measurements of doors, windows, rooms and any other items are approximate and no responsibility is taken for any error, omission or mis-statement. This plan is for illustrative purposes only and should be used as such by any prospective purchaser. The services, systems and appliances shown have not been tested and no guarantee as to their operability or efficiency can be given.

Made with Metropix ©2024

