

## North End Road, Yatton

Guide Price £675,000

🛏 4 🚿 2 🛋 3

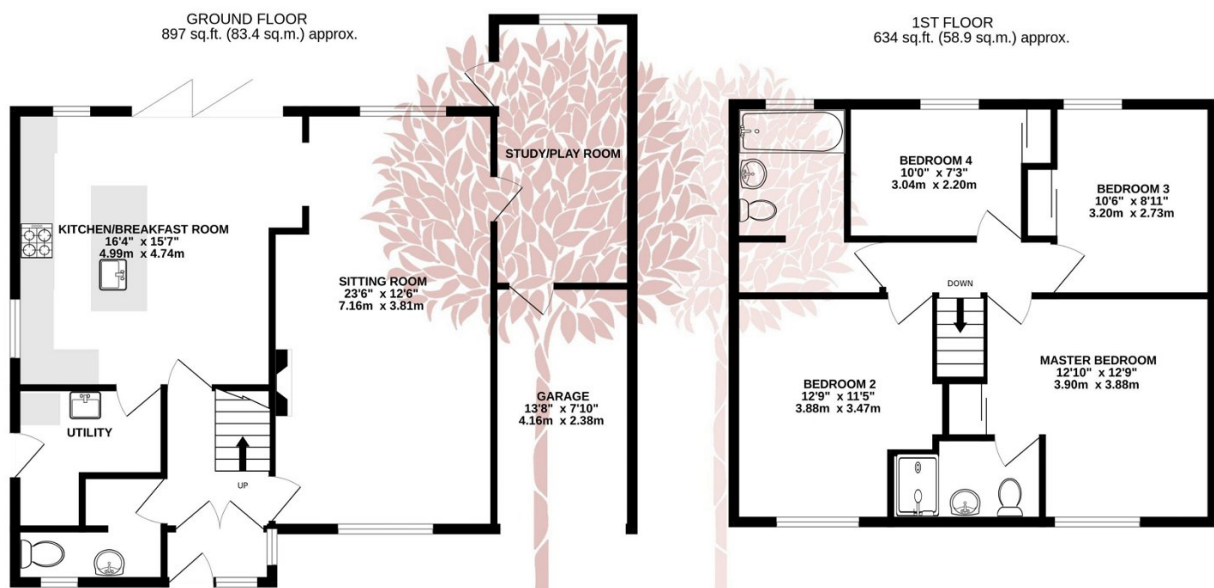


**A SPACIOUS AND BRIGHT FOUR BEDROOM DETACHED HOUSE** on North End Road in Yatton. The perfect position for access to the village yet in a rural setting with an incredible garden and land the rear.



## Key Features

- Detached four bedroom house
- Gated driveway for several cars
- Three reception rooms
- Open plan kitchen diner with utility room
- Downstairs cloakroom
- Master bedroom with ensuite
- Vast gardens with land to the rear
- Immaculate throughout
- Single garage with manual roll over door
- Council Tax Band F & EPC D



TOTAL FLOOR AREA: 1531 sq.ft. (142.2 sq.m.) approx.

Whilst every attempt has been made to ensure the accuracy of the floorplan contained here, measurements of doors, windows, rooms and any other items are approximate and no responsibility is taken for any error, omission or mis-statement. This plan is for illustrative purposes only and should be used as such by any prospective purchaser. The services, systems and appliances shown have not been tested and no guarantee as to their operability or efficiency can be given.  
Made with Metropix ©2024

