

Henley Park, Yatton

£325,000

3 2 0

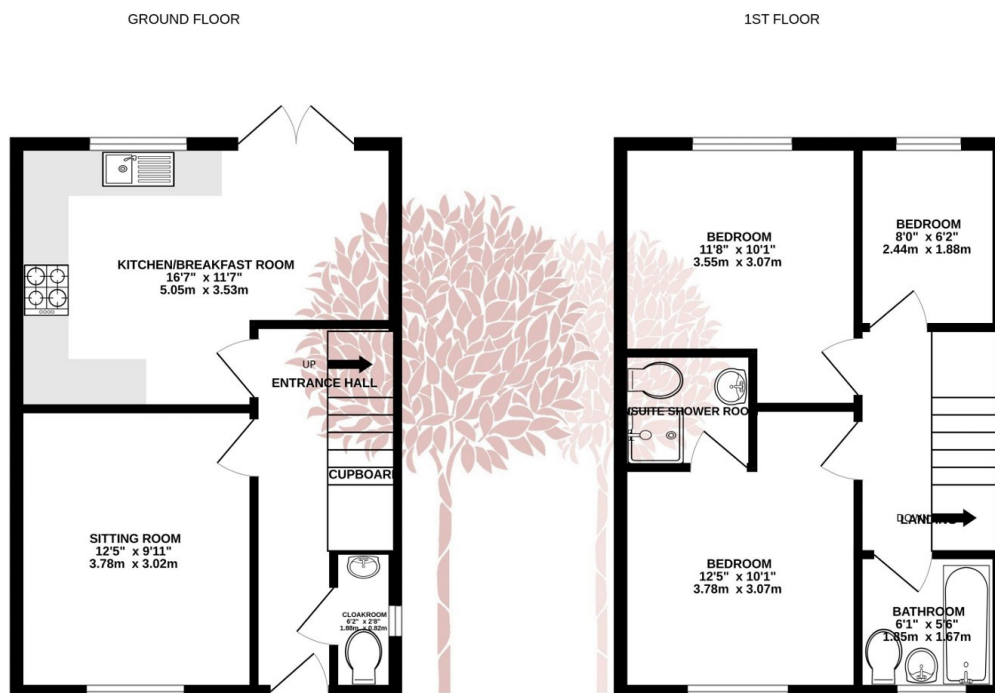


VILLAGE LOCATION- A immaculate detached house situated in a convenient village position with off street parking and a great sized garden.



Key Features

- Immaculate detached home
- Open plan kitchen/breakfast room
- En suite to the master bedroom
- Good sized garden
- Off street parking
- Walking distance to village amenities
- EPC B
- Council Tax Band D
-
-



TOTAL FLOOR AREA: 808sq.ft. (75.1 sq.m.) approx.

Whilst every attempt has been made to ensure the accuracy of the floorplan contained here, measurements of doors, windows, rooms and any other items are approximate and no responsibility is taken for any error, omission or mis-statement. This plan is for illustrative purposes only and should be used as such by any prospective purchaser. The services, systems and appliances shown have not been tested and no guarantee as to their operability or efficiency can be given.

Made with Metropix ©2024

