

## Sheppys Mill, Congresbury

£195,000

🛏 2 🚿 2 🚺 1

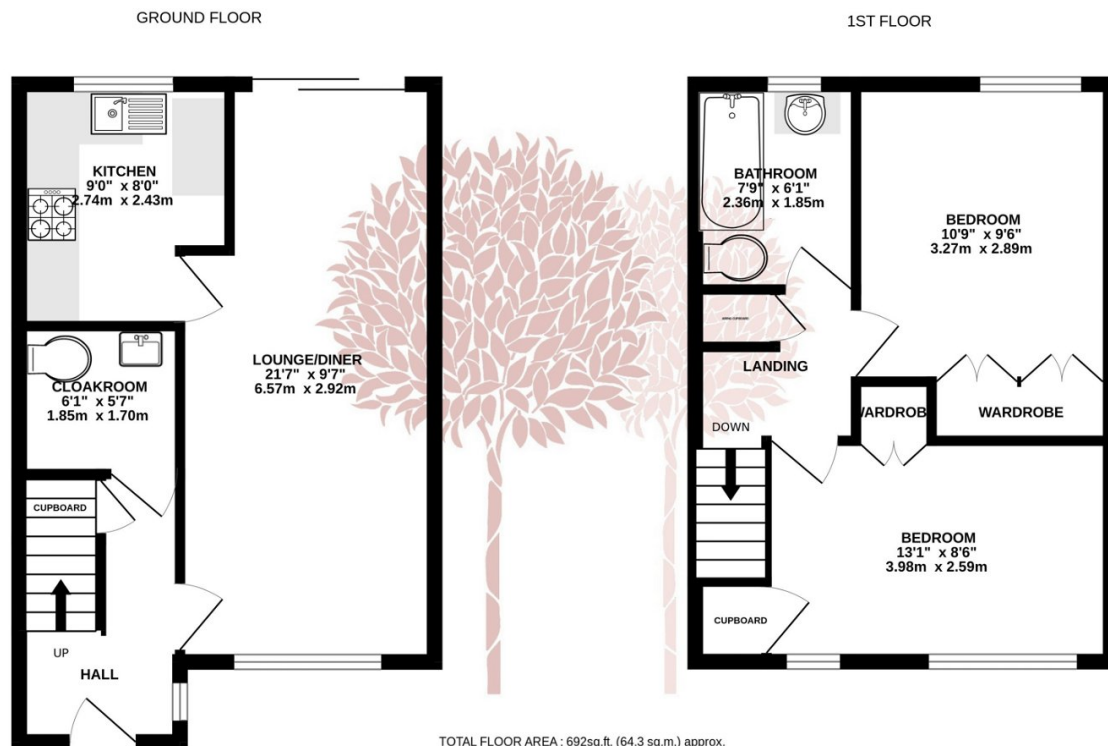


**NO ONWARD CHAIN** - A mid-terraced property set in a convenient location within the village for the over 60's. The property benefits from a private and leafy outlook and allocated off street parking.



## Key Features

- Two bedroom terraced home for the over 60's
- Short walk to the village amenities
- Front and rear gardens
- EPC- C
- Set at the end of the development with a leafy outlook
- Allocated parking space
- No onward chain
- Council Tax Band- C



TOTAL FLOOR AREA : 692sq.ft. (64.3 sq.m.) approx.

Whilst every attempt has been made to ensure the accuracy of the floorplan contained here, measurements of doors, windows, rooms and any other items are approximate and no responsibility is taken for any error, omission or mis-statement. This plan is for illustrative purposes only and should be used as such by any prospective purchaser. The services, systems and appliances shown have not been tested and no guarantee as to their operability or efficiency can be given.  
Made with Metropix ©2023

