

Potters view, Congresbury

£565,000

3 2 1



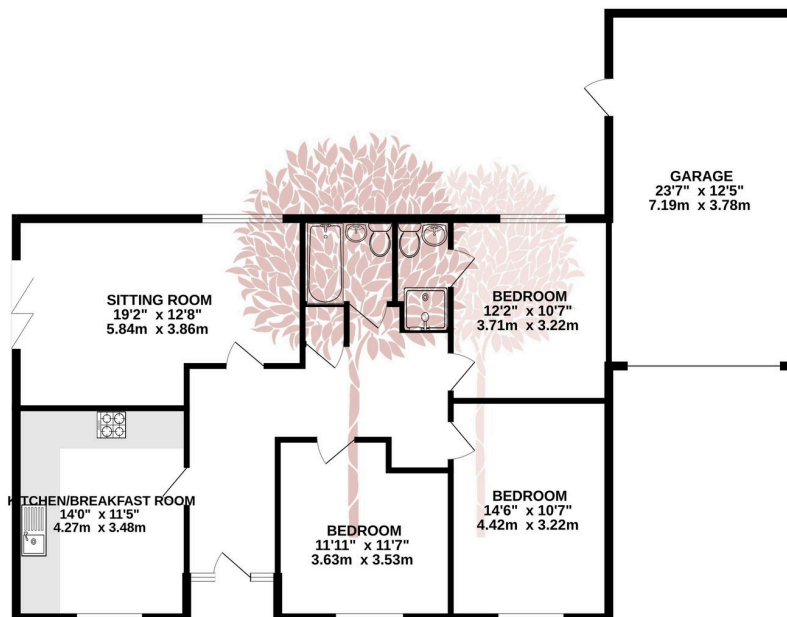
A well-proportioned detached bungalow built in 2018 situated in the popular village of Congresbury with a beautiful garden, off street parking and a garage.



Key Features

- Detached bungalow constructed by 'Strongvox Homes' in 2018
- Three bedrooms with the master benefiting from an en suite
- Stunning rear garden
- Contemporary interior
- Solar panels to the rear
- High quality fittings
- Garage and off street parking
- Peaceful location within the village
- Walking distance to village amenities

GROUND FLOOR
1334 sq.ft. (123.9 sq.m.) approx.



TOTAL FLOOR AREA: 1334 sq.ft. (123.9 sq.m.) approx.
Whilst every attempt has been made to ensure the accuracy of the floorplan contained here, measurements of doors, windows, rooms and any other items are approximate and no responsibility is taken for any error, omission or mis-statement. This plan is for illustrative purposes only and should be used as such by any prospective purchaser. The services, systems and appliances shown have not been tested and no guarantee as to their operability or efficiency can be given.
Made with Metroplan ©2024

