

debbie fortune

ESTATE AGENTS

27 Mayors Road, Claverham

£365,000

🛏 3 🚿 2 🚗 2

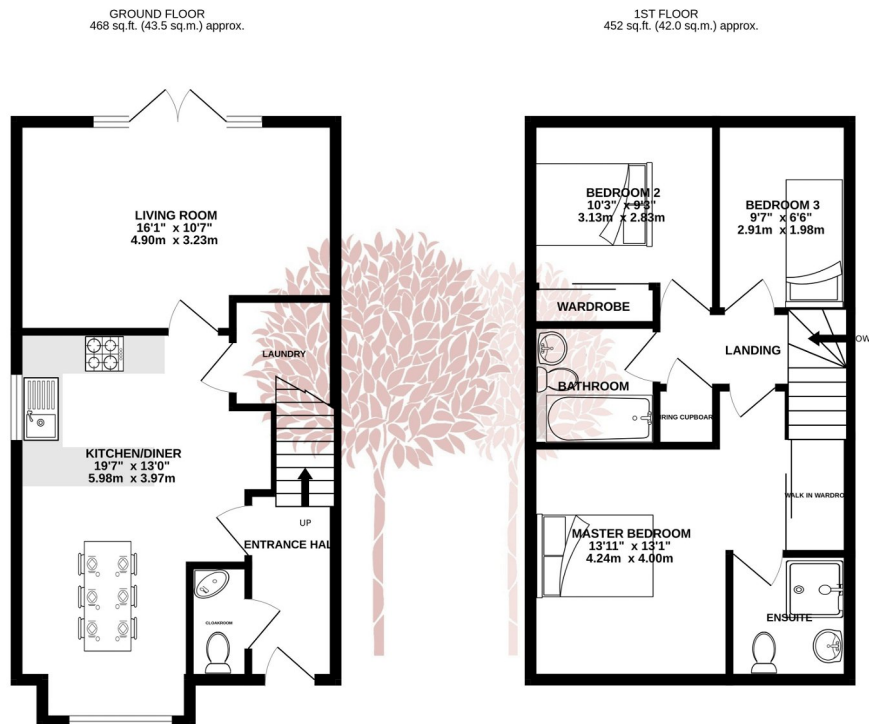


STYLISH – A stylish three-bedroom semi-detached family home situated within the hugely popular Court de Wyck development built by well-regarded housebuilders Newland Homes. The property is within Backwell School & 6th Form catchment with Court de Wyck primary school just moments away. EPC rating B.



Key Features

- Super three bedroom semi-detached modern home
- Allocated off street parking
- Two Contemporary bathrooms including en-suite, plus ground floor cloaks
- Spacious sitting room with French doors to the garden
- Council Tax Band C
- Light and airy interior throughout
- Stylish open plan kitchen/diner with quality appliances
- Enclosed lawned garden with extended patio area and side access
- Backwell School and 6th Form catchment, Court de Wyck primary school just moments away
- EPC B



TOTAL FLOOR AREA - 920 sq.ft. (85.5 sq.m.) approx.

Whilst every attempt has been made to ensure the accuracy of the floorplan contained here, measurements of doors, windows, rooms and any other items are approximate and no responsibility is taken for any error, omission or mis-statement. This plan is for illustrative purposes only and should be used as such by any prospective purchaser. The services, systems and appliances shown have not been tested and no guarantee is given as to their operability or efficiency can be given.
Made with Metropix ©2023

