

debbie fortune

ESTATE AGENTS

Wakedean Gardens, Yatton

£280,000

3 1 2



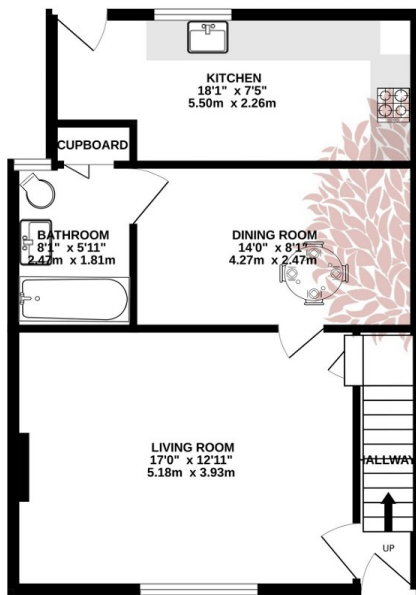
GENEROUS GARDEN - A really well presented three bedroom family home perfect for a first time purchase or even downsize in a superbly convenient position in the village of Yatton



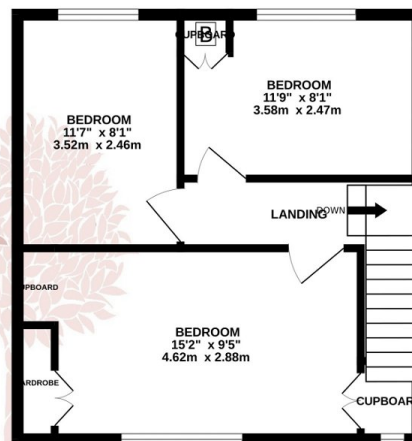
Key Features

- Well presented three bedroom terraced home
- Perfect purchase for first time buyers/ investors or downsizers
- Lovely neutral decoration throughout
- Sitting room with feature fire and separate kitchen/dining room
- Council Tax Band- B
- Off street parking and generous garden
- Close to excellent local amenities and transport links
- Gas central heating and double glazing
- EPC-D
-

GROUND FLOOR
551 sq.ft. (51.2 sq.m.) approx.



1ST FLOOR
416 sq.ft. (38.7 sq.m.) approx.



TOTAL FLOOR AREA : 967 sq.ft. (89.8 sq.m.) approx.

Whilst every attempt has been made to ensure the accuracy of the floorplan contained here, measurements of doors, windows, rooms and any other items are approximate and no responsibility is taken for any error, omission or mis-statement. This plan is for illustrative purposes only and should be used as such by any prospective purchaser. The services, systems and appliances shown have not been tested and no guarantee as to their operability or efficiency can be given.

Made with Metropix ©2023

