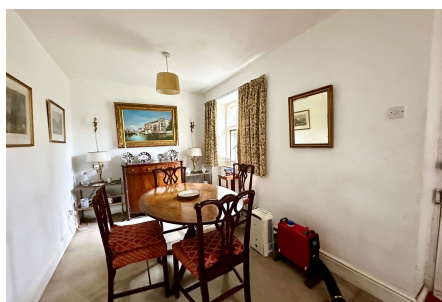


Eastwood Manor Cottages, East Harptree

Guide Price £450,000

3 1 2

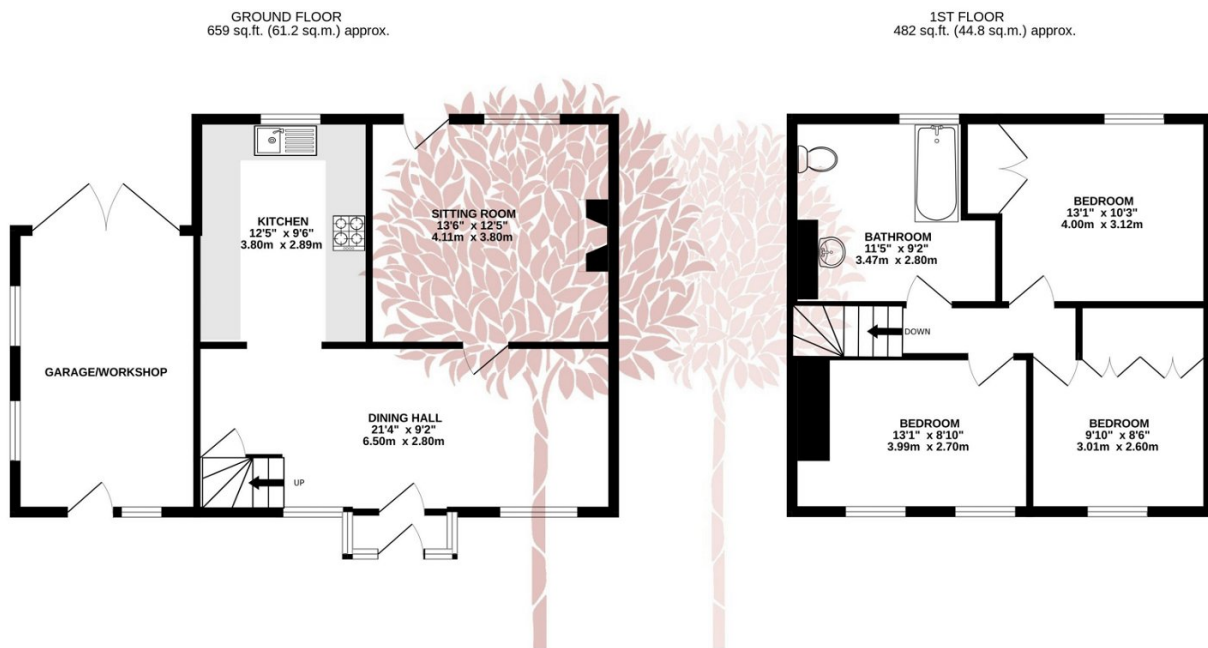


OUTSTANDING RURAL LOCATION - set within the original grounds of East Harptree Manor is this charming cottage, in need to modernisation and set within the most stunning private gardens and wider grounds of the estate.



Key Features

- Charming cottage set in a peaceful location
- Three double bedrooms
- Scope to extend (subject to planning permission)
- Beautiful side and rear landscaped gardens
- Off street parking for two cars
- Renovation required
- Two reception rooms
- Excellent rural location
- Two large garage/workshops
- EPC G



TOTAL FLOOR AREA: 1141 sq.ft. (106.0 sq.m.) approx.

Whilst every attempt has been made to ensure the accuracy of the floorplan contained here, measurements of doors, windows, rooms and any other items are approximate and no responsibility is taken for any error, omission or mis-statement. This plan is for illustrative purposes only and should be used as such by any prospective purchaser. The services, systems and appliances shown have not been tested and no guarantee as to their operability or efficiency can be given.

Made with Metropix ©2024

