

# debbie fortune

ESTATE AGENTS

## Claverham Road, Claverham

£525,000

3 2 2

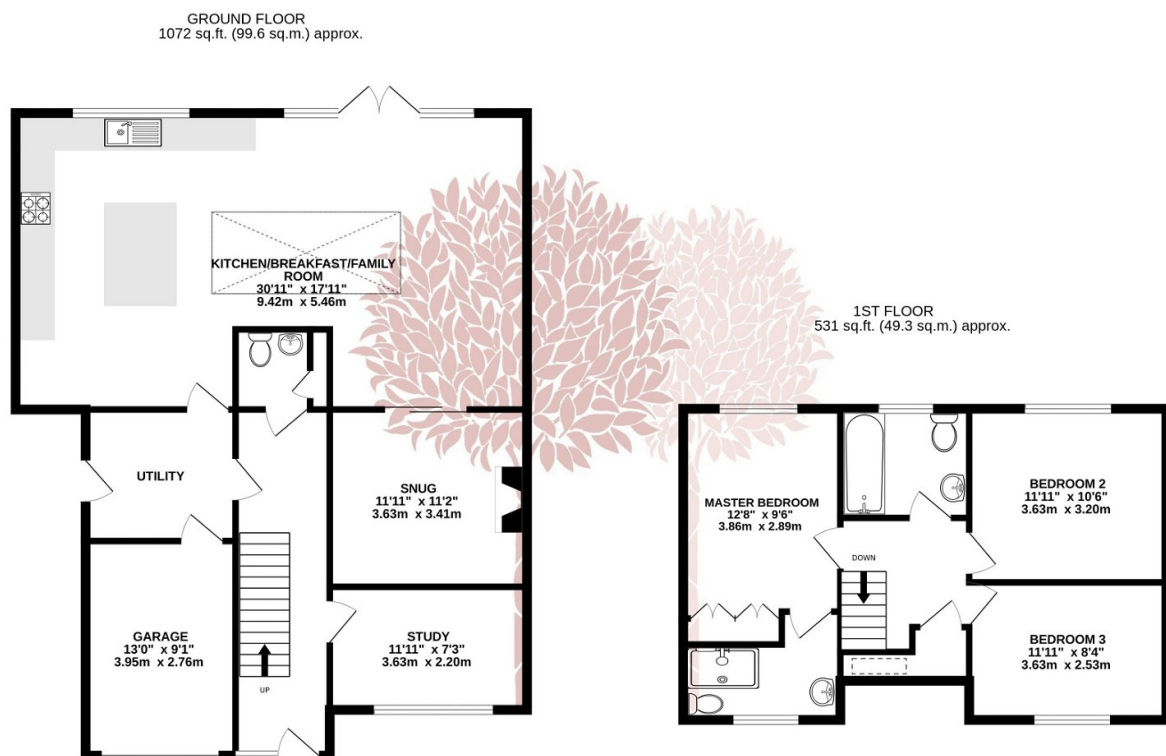


A cleverly designed property situated in an elevated location with far reaching countryside views. Other benefits include off street parking and a garage.



## Key Features

- Detached family home with a stunning kitchen extension
- Light and airy open plan accommodation
- Off street parking and a single garage
- Spacious family home
- Council Tax Band E
- Set in an elevated location backing onto countryside
- Three double bedrooms
- Great for commuting to Bristol or Weston-super-Mare
- Countryside Views
- EPC C



TOTAL FLOOR AREA : 1603 sq.ft. (148.9 sq.m.) approx.

Whilst every attempt has been made to ensure the accuracy of the floorplan contained here, measurements of doors, windows, rooms and any other items are approximate and no responsibility is taken for any error, omission or mis-statement. This plan is for illustrative purposes only and should be used as such by any prospective purchaser. The services, systems and appliances shown have not been tested and no guarantee as to their operability or efficiency can be given.

Made with Metropix ©2023

