

debbie fortune

ESTATE AGENTS

Bishops Road, Cleeve

£480,000

🛏 3 🚗 1 🛋 2

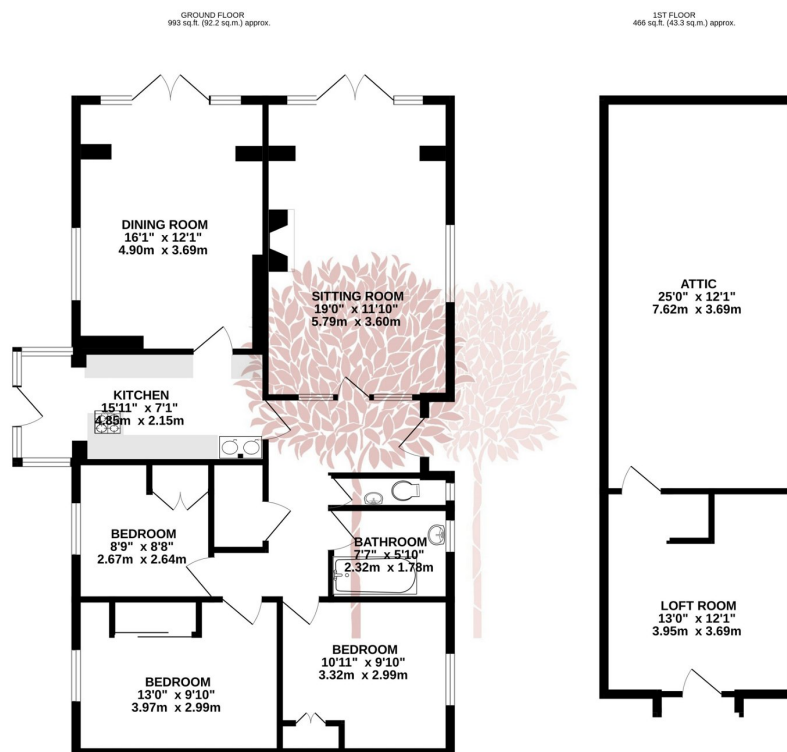


A TRULY DELIGHTFUL three-bedroom detached character bungalow set in a convenient edge of village position, with beautiful established gardens to the front and rear, and generous off-street parking leading to a car port and a single garage/workshop.



Key Features

- Superb three-bedroom detached character bungalow
- Beautiful established gardens to both the front and the rear
- Generous off-street parking plus tandem garage and Countryside views
- Two wonderful dual aspect reception rooms
- Kitchen with AGA in gorgeous British Racing Green
- Exceptional potential to add further accommodation to the 1st floor (subject to planning permission)
- Close to the local primary school and Backwell school catchment
- Offered to the market with no onward chain complications
- Council Tax band E
- EPC rating E



TOTAL FLOOR AREA: 1459 sq.ft. (135.5 sq.m.) approx.
Whilst every attempt has been made to ensure the accuracy of the figures contained here, measurements of doors, windows, rooms and any other items are approximate and no responsibility is taken for any error, omission or mis-statement. This plan is for illustrative purposes only and should be used as such by any prospective purchaser. The services, systems and appliances shown have not been tested and no guarantee as to their operability or efficiency can be given.
Made with Metropix ©2023

