

debbie fortune

ESTATE AGENTS

Bishops Mead, Cleve

£279,950

3 1 1

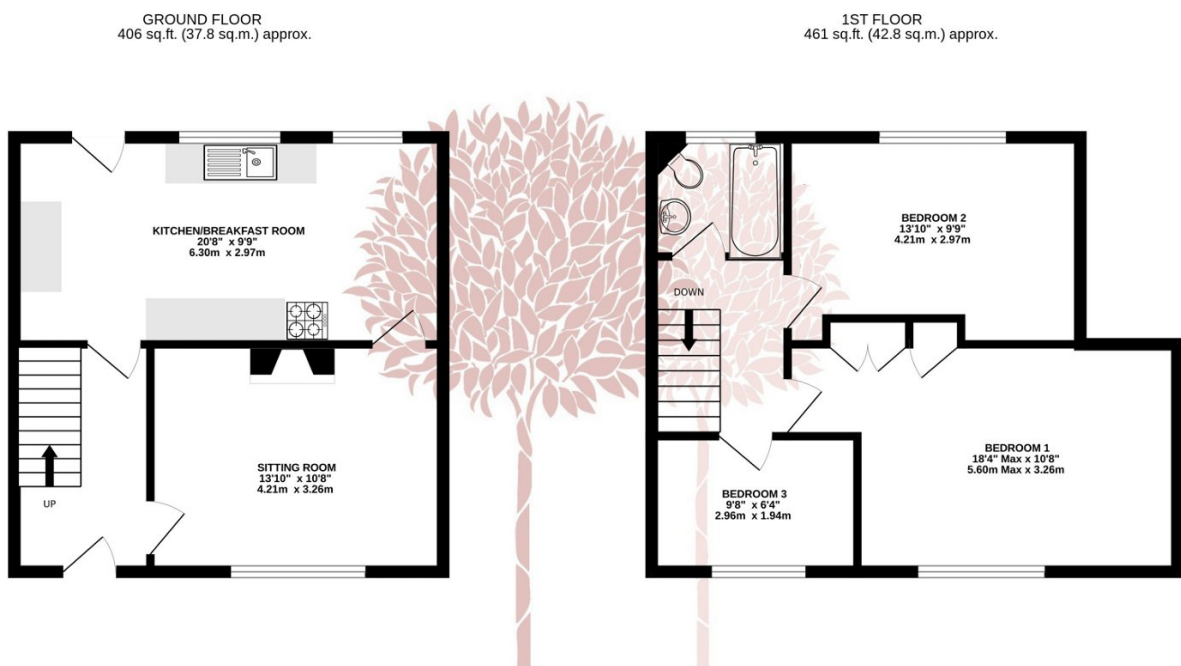


BACKING ONTO COUNTRYSIDE - A mid-terrace house situated in a convenient spot for commuting to Bristol or Weston-super-Mare. The property benefits from a larger than average garden and superb views over countryside.



Key Features

- Three bedroom mid-terrace house
- Large rear garden, backing onto countryside
- Off street parking
- Superb views
- Countryside walks on the doorstep
- Great for commuting to Bristol
- Council Tax Band A
- EPC D
-
-



TOTAL FLOOR AREA : 867 sq.ft. (80.6 sq.m.) approx.

Whilst every attempt has been made to ensure the accuracy of the floorplan contained here, measurements of doors, windows, rooms and any other items are approximate and no responsibility is taken for any error, omission or mis-statement. This plan is for illustrative purposes only and should be used as such by any prospective purchaser. The services, systems and appliances shown have not been tested and no guarantee as to their operability or efficiency can be given.
Made with Metropix ©2023

