

## Bishops Road, Cleeve

£325,000

 2  1  3



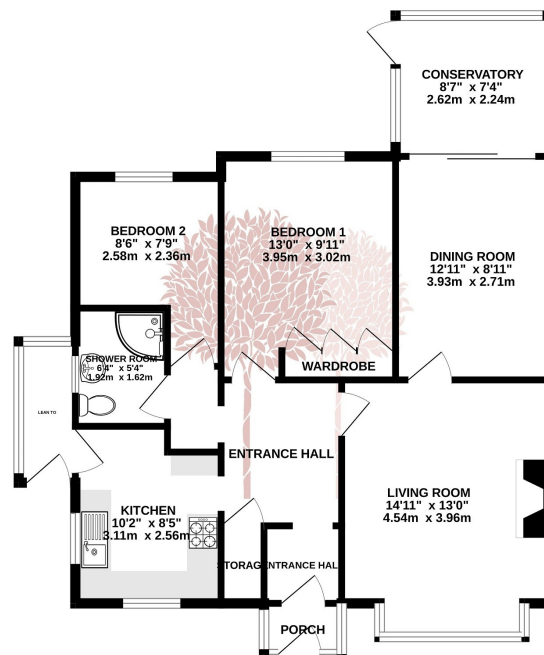
A SUPERB OPPORTUNITY to purchase a semi-detached bungalow in need of updating and with plenty of scope to extend (subject to planning permission).



## Key Features

- Semi-detached two-bedroom bungalow
- Walking distance to village amenities
- Countryside walks nearby
- No onward chain
- Pretty front and rear gardens
- Great scope to improve and extend (subject to planning permission)
- Council Tax band C
- EPC rating D
- 
- 

GROUND FLOOR  
811 sq.ft. (75.3 sq.m.) approx.



TOTAL FLOOR AREA: 811 sq.ft. (75.3 sq.m.) approx.  
Whilst every attempt has been made to ensure the accuracy of the floorplan contained here, measurements of doors, windows, rooms and any other items are approximate and no responsibility is taken for any error, omission or mis-statement. This plan is for illustration purposes only and should be used as such by any prospective purchaser. The services, systems and appliances shown have not been tested and no guarantee as to their operability or efficiency can be given.  
Made with Metropix ©2023

