

Crooked Cottage, 31 Sandford Road, Winscombe

£450,000

3 0 0

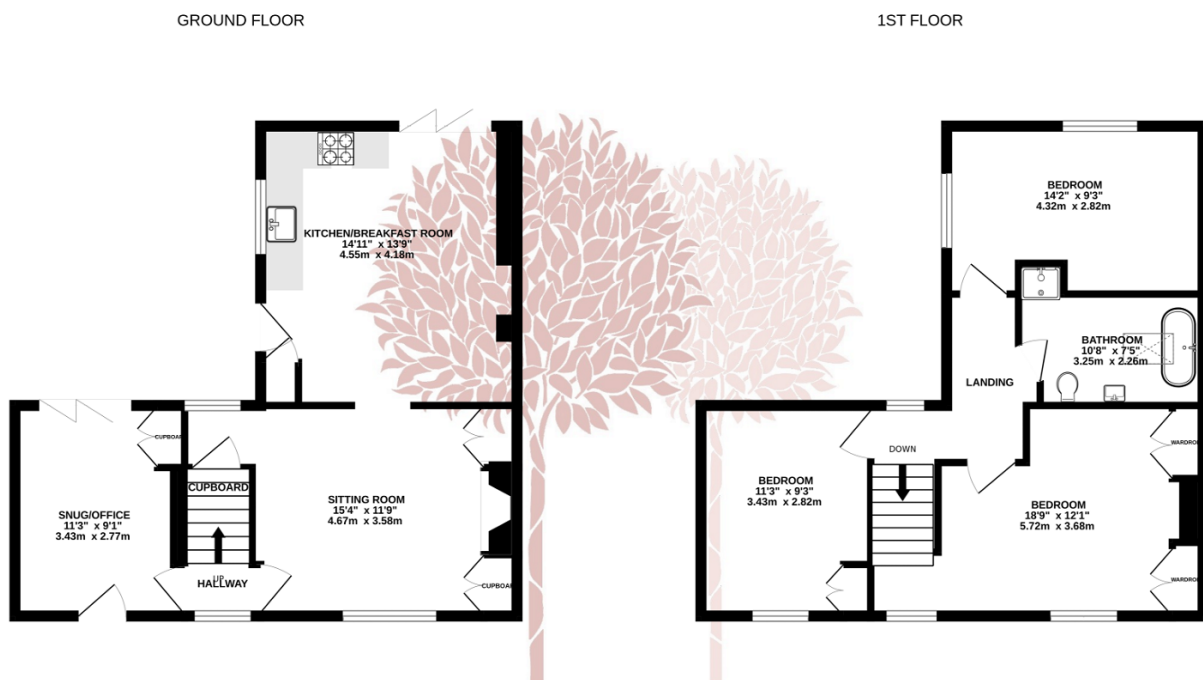


An idyllic and beautifully presented period cottage, set in a wonderfully convenient position within the popular village of Winscombe. Dating back to the early 1800's 'Crooked Cottage' is an enchanting three bedroom home, packed with character and charm which features a pretty south facing rear garden, two reception rooms and off street parking.



Key Features

- Captivating three bedroom period cottage
- Packed with original features with a refined homely interior
- Off street parking to the front
- Beautifully private South/west facing rear garden
- Two unique reception rooms
- Outstanding traditional styled kitchen with island unit
- Close to excellent local amenities and schools
- Luxurious family bathroom including walk in shower and clawfoot bath
-
-



Whilst every attempt has been made to ensure the accuracy of the floorplan contained here, measurements of doors, windows, rooms and any other items are approximate and no responsibility is taken for any error, omission or mis-statement. This plan is for illustrative purposes only and should be used as such by any prospective purchaser. The services, systems and appliances shown have not been tested and no guarantee as to their operability or efficiency can be given.
Made with Metropix ©2024

