

## Somerlea Stables, Lower Langford

£385,000

🛏️ 2 🚗 1 🛋️ 1



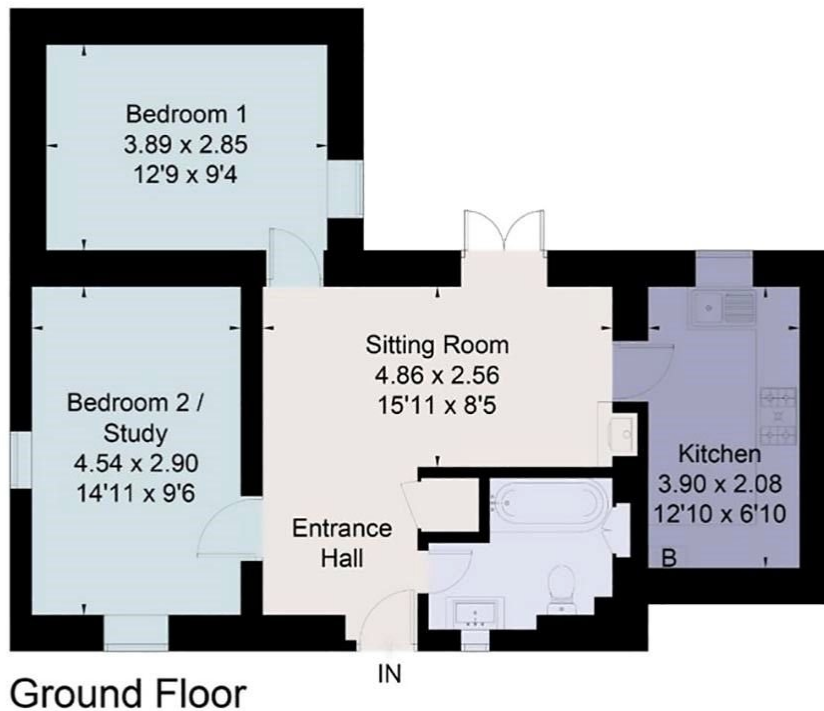
An utterly charming semi-detached stone barn conversion in a prime village location of Lower Langford with a delightful sunny courtyard garden and off street parking for two cars.



## Key Features

- Beautifully renovated stone barn conversion
- Luxurious new bathroom
- Sunny courtyard garden and flagstone terrace
- Prime village location including popular local gastro pub
- EPC rating D
- Characterful living room with vaulted ceiling, oak flooring and log burner
- Two double bedrooms
- Off street courtyard parking for two cars
- Fantastic investment opportunity for rental or second home
- Council tax band C

Approximate Floor Area = 60.8 sq m / 654 sq ft



This floor plan has been drawn in accordance with RICS Property Measurement 2nd edition.  
All measurements, including the floor area, are approximate and for illustrative purposes only. @fourwalls-group.com 64127

