



POWERED BY
NIKKI DAVIES **exp**™ **UK**

@ nikki.davies@exp.uk.com

nikkidavies.exp.uk.com

☎ 07770 976 137

Over 60s Apartment, Rectory Court, Church Lane, Marple, SK6

£139,950

1 1 1

- ONE BEDROOM GROUND FLOOR RETIREMENT APARTMENT
- NO ONWARD CHAIN
- RESIDENT & VISITOR PARKING
- WEEKLY SOCIAL ACTIVITIES & RESIDENTS ASSOCIATION
- SECURE ENTRY SYSTEM, HOUSE MANAGER AND CARELINE ALARM SERVICE
- WITH PATIO AND DIRECT ACCESS TO GARDENS
- CENTRAL MARPLE LOCATION
- SUPERB ONSITE FACILITIES - LIFTS, RESIDENTS' LOUNGE
- KITCHEN, LAUNDRY, LIBRARY AND VISITOR ACCOMMODATION



Rectory Court is a highly regarded retirement development exclusively for the over 60's conveniently located in the heart of Marple town centre. This one bedroom apartment is situated on the ground floor and benefits from a patio area and direct access to the gardens. Its westerly facing aspect means it is perfectly positioned to enjoy some beautiful sunsets from both the lounge and the bedroom.

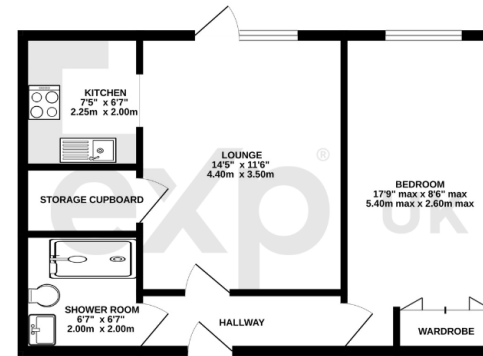
The Apartment:

Spanning just over 450 sq ft (40 sq m), the apartment briefly comprises; hallway, lounge, kitchen, bedroom and shower room.

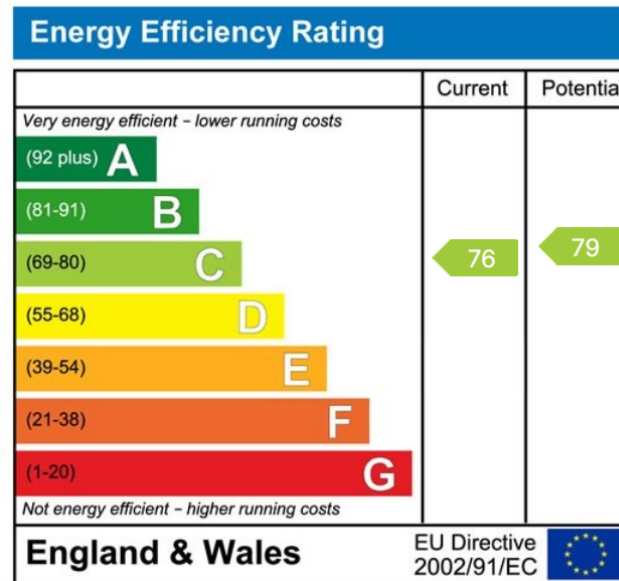




GROUND FLOOR
471 sq.ft. (43.7 sq.m.) approx.



GROUND FLOOR ONE BEDROOM APARTMENT - RECTORY COURT, MAPLE
TOTAL FLOOR AREA - 471 sq.ft. (43.7 sq.m.) approx.



eXp World UK Ltd is a registered company at Level 37, 25 Canada Square, London, E14 5LQ.

Registered company number is 12016573. VAT Registration Number is 327 4120 29