



Hickory Way, Chippenham

Offers Over £250,000

🏠 2 🛏 1 🚗 1



01225 705650



hello@jainewhitfield.co.uk



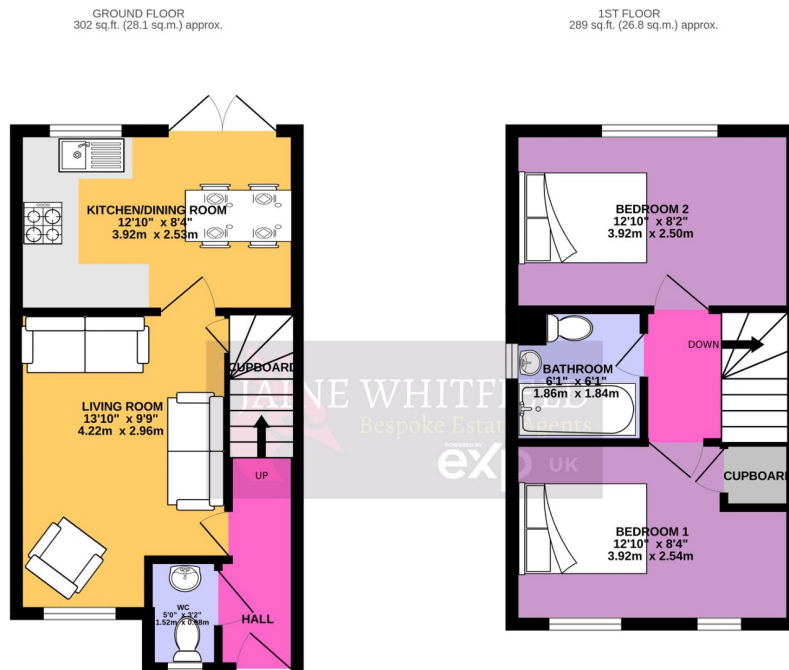
www.jainewhitfield.co.uk



Part of the international group of estate agents
powered by EXP UK. Registered address:
5 Churchill Place, 10th Floor, London E14 5HU



- 3 year old, modern 2 bedroom property
- A perfect first time buy, downsize or investment property
- Hallway with downstairs cloakroom
- Sitting room with box window and storage
- Light filled kitchen/diner with French doors onto garden
- 2 excellent and evenly sized double bedrooms.
- Modern main bathroom with shower over bath
- Excellent garden with large patio for BBQ's
- 2 side by side parking spaces
- Close to local amenities, green spaces and easy access to Chippenham town centre.



TOTAL FLOOR AREA: 591 sq.ft. (54.9 sq.m.) approx.
Whilst every attempt has been made to ensure the accuracy of the floorplan contained herein, measurements of doors, windows, rooms and any other items are approximate and no responsibility is taken for any error, omission or mis-statement. This plan is for illustrative purposes only and should be used as such by any prospective purchaser. The services, systems and appliances shown have not been tested and no guarantee as to their operability or efficiency can be given.
 Made with Metropix ©2021

The perfect first time buy, downsize or investment property! Built just a few years ago, there is the remainder of a 10 years NHBC warranty to go with this lovely modern semi detached 2 bedroom home. A well thought out design offers a downstairs cloakroom, kitchen/diner with French doors and 2 excellent double bedrooms and generous bathroom. All topped off with a lovely garden, 2 parking spaces and a fabulous quiet location within easy access to all amenities.



01225 705650



hello@jainewhitfield.co.uk



www.jainewhitfield.co.uk

