



JAINE WHITFIELD
Bespoke Estate Agents



POWERED BY
exp™ UK

Holt Village

£685,000

🛏️ 4 🚿 2 🚗 2



I just loved this fabulous home from the minute I walked through the wooden gates, through the garden, and through the front door. The character of the old red brick and other buildings surrounding give that feeling that you've stepped back in time. Yet, the minute you walk inside, period charm meets modern finishes and conveniences with a truly unique and quirky style.

A very generous hallway stretches almost the full length of the property, but with a quirky curve in the wall, doesn't feel like the usual corridor that so many hallways do. It also offers lots of room to store coats and shoes under the stairs. For convenience, there is a modern downstairs WC with a range of vanity units and the usual fittings.

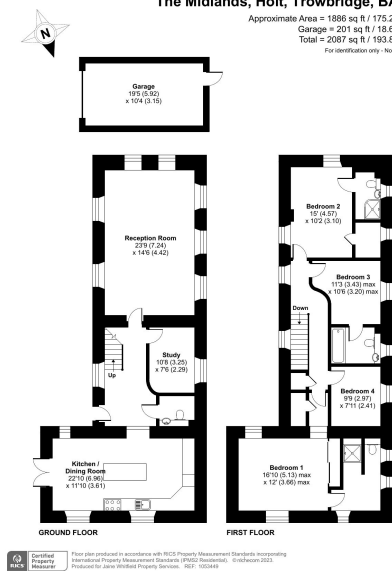
Now the accommodation starts to get really interesting. To the right a couple of steps up, and you enter the most fantastic kitchen/dining room. There is lots of light and the vaulted height adds to the already great feeling of space. Beautifully fitted with cleverly designed units and a stunning composite worktop above, there is every appliance and storage item you require. These include a pull-out larder, deep pantry corner cupboard, pan drawers, inset sink with mixer tap, and instant boiling water facility. Appliances consist of a built-in Neff five-ring induction hob with an extractor hood over, eye level Neff double oven, dishwasher, washing machine, wine fridge (essential for mum), full height integrated fridge with full height freezer alongside. The excellent breakfast bar provides more casual seating options along with plenty of room for a large family dining table right next to the French doors which open out onto the garden. This is most certainly the hub of the home and is perfect for entertaining!

Next up is the generous living room. Again, so large that you can comfortably host all the family around the TV at Christmas, but with a cosy character to snuggle up on the sofa and read. With no less than 7 windows, this spacious room is another special place for all the family. Lastly, on the ground floor, another important room is the large study, which could also be the perfect playroom for those

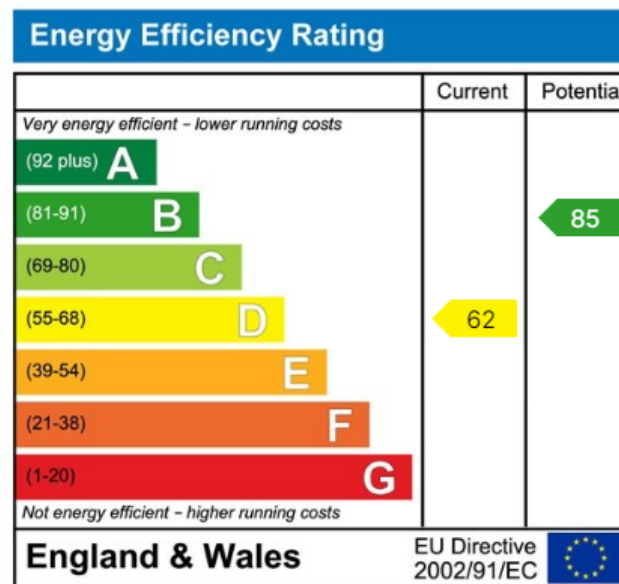


The Midlands, Holt, Trowbridge, BA14

Approximate Area = 1886 sq ft / 175.2 sq m
 Garage = 201 sq ft / 18.6 sq m
 Total = 2087 sq ft / 193.8 sq m
 For identification only - Not to scale



- Quirky, characterful and modernised 4 bedroom family home
- Huge living room with room for the extended family
- Master suite with stunning wet room and wardrobes
- Bedroom 3 and 4 with "Jack and Jill" Bathroom
- Convenient for Bradford on Avon and it's transport links to Bath
- Stunning kitchen/dining space with clever storage and French doors to the garden
- Additional Study/playroom downstairs
- 2nd bedroom with walk in wardrobe and en suite
- Nestled in a quiet location within the popular village of Holt
- Good sized garden, single garage and additional parking



01225 705650



hello@jainewhitfield.co.uk



www.jainewhitfield.co.uk



Part of the international group of estate agents powered by EXP UK. Registered address: 5 Churchill Place, 10th Floor, London E14 5HU