



Neston village

£465,000

🛏 4 🚿 2 🚗 2



01225 705650



hello@jainewhitfield.co.uk



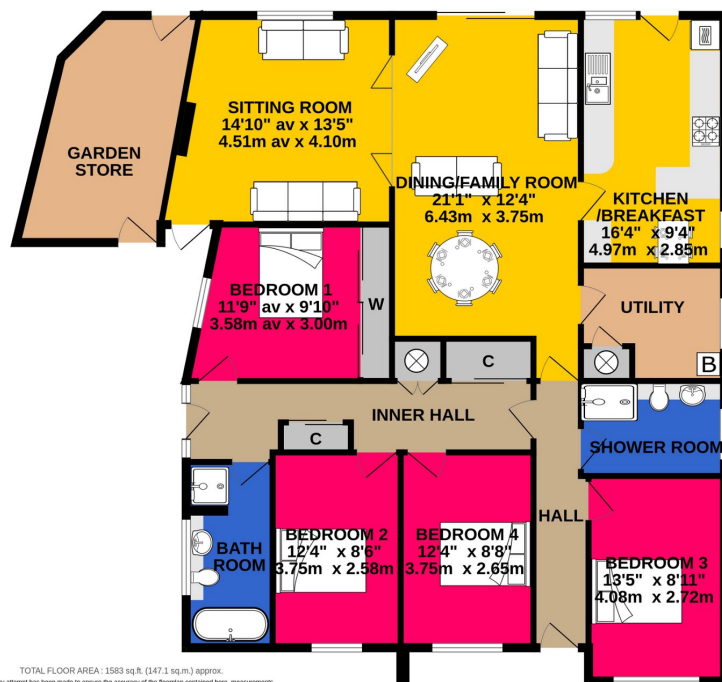
www.jainewhitfield.co.uk



Part of the international group of estate agents
powered by EXP UK. Registered address:
5 Churchill Place, 10th Floor, London E14 5HU



- Neston Village location
- 4 excellent double bedrooms
- Sitting room with feature fireplace
- 21ft Dining/family room
- Kitchen/breakfast room plus utility
- Full bathroom and additional shower room
- Large wrap around gardens with a private feel.
- Driveway parking to the front.
- Walking distance to all local amenities and countryside walks.
- No onward chain



TOTAL FLOOR AREA: 1583 sq.ft. (147.1 sq.m.) approx.
While every effort has been made to ensure the accuracy of the floorplan contained here, measurements of doors, windows, rooms and any other items are approximate and no responsibility is taken for any error, omission or misstatement. This plan is for guidance purposes only and should be used as such by any prospective purchaser. The services, systems and appliances shown have not been tested and no guarantee as to their operability or efficiency can be given.
 Made with Metropix ©2023

GROUND FLOOR
 1583 sq.ft. (147.1 sq.m.) approx.



A very deceptive, spacious 4 double bedroom detached bungalow situated in a very quiet close within the ever popular village of Neston. Extended over the years, this home offers great space for any family and with an excellent size and private garden to the rear, this home offers fantastic space overall. With so much accommodation, the property could also be adapted to allow for a self-contained annexe. **NO ONWARD CHAIN!**



01225 705650



hello@jainewhitfield.co.uk



www.jainewhitfield.co.uk

