



JAINE WHITFIELD
Bespoke Estate Agents



POWERED BY
exp™ UK

Atworth Village

Offers Over £400,000

3 1 2



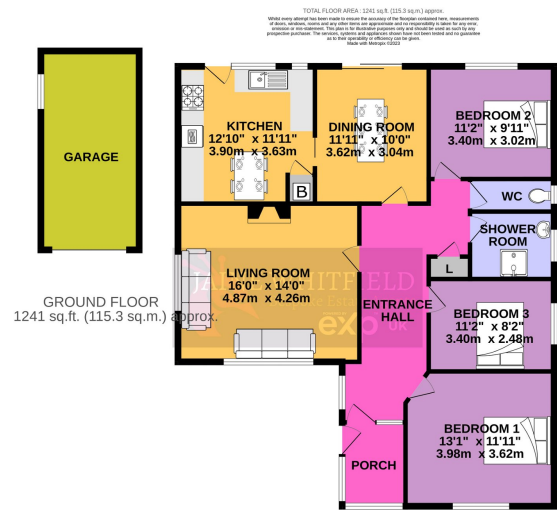
What can I say? I am privileged to have been asked to market this property for the first time in over 50 years. This excellent 3 bedroom bungalow sits within its own spacious plot and offers its new owners the opportunity to put their own stamp on it and continue to love it as much as the previous owners have. The property has been well maintained over the years but now some cosmetic updating may be in order. However, you could move in and decide how to make it your own over time.

On entering the property you first go through the double-glazed spacious porch which offers an excellent place to drop off coats and shoes. The main hallway opens up to a fabulous wide entrance. It is believed that there is a parquet floor waiting to be uncovered, evidence of which can be seen in the useful cupboard. The living room is a light and bright space with 2 large windows throwing in loads of light and a central fireplace with an inset gas fire. Across the rear of the property is a large kitchen/breakfast room and separate dining room. The kitchen is a fantastic size with plenty of room for a small table, a large window overlooking the garden, and a door out onto the patio. The units are of a 60/70s style which although in great order, you may choose to change and I'm sure some buyers will be itching to knock through to the dining room and create a fabulous area as they upgrade. If you prefer a more formal dining room then leave it all as it is and enjoy the great space with patio doors out onto the garden. The choice is yours.

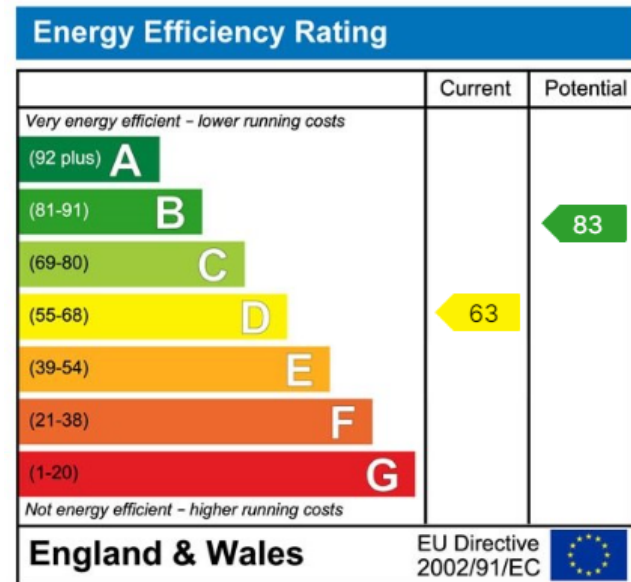
The 3 bedrooms are all located to one side of the house which is lovely to give that element of separation from the living areas. All 3 could accommodate a double bed with a choice of whether you are overlooking the garden to the front or the rear. The larger 2 rooms have plenty of space for wardrobes and the 3rd would make a perfect study/occasional bedroom. The front bedroom also benefits from sound insulating glass which is incredibly effective. There is also a generous shower room and a separate WC.

The really big attraction to this property is the large plot it sits within. Set in an elevated position, the approach to the bungalow





- Fabulous sized 3 bedroom bungalow
- Kitchen/Breakfast room with potential to extend
- Elevated position with gardens to front and rear
- Single garage and parking for multiple cars
- Central village location close to shops and bus services
- Generous living room and great dining room
- Large shower room
- Fabulous level rear garden with vegetable plots and flower beds.
- Well maintained condition with cosmetic updating required
- No onward chain !



01225 705650



hello@jainewhitfield.co.uk



www.jainewhitfield.co.uk



Part of the international group of estate agents
powered by EXP UK. Registered address:
5 Churchill Place, 10th Floor, London E14 5HU