



Atworth Village

£425,000

3 1 2



01225 705650



hello@jainewhitfield.co.uk



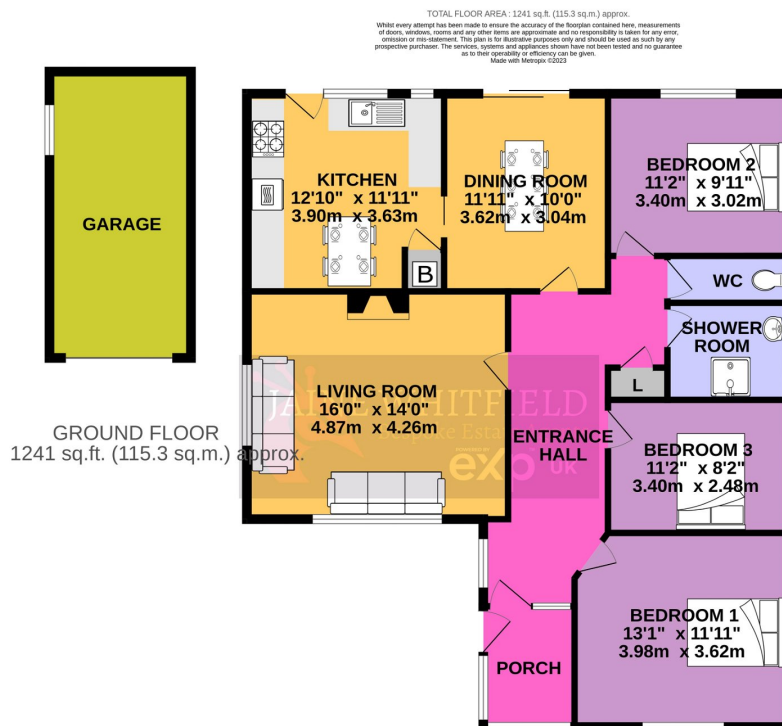
www.jainewhitfield.co.uk



Part of the international group of estate agents
powered by EXP UK. Registered address:
5 Churchill Place, 10th Floor, London E14 5HU



- Fabulous sized 3 bedroom bungalow
- Kitchen/Breakfast room with potential to extend
- Elevated position with gardens to front and rear
- Single garage and parking for multiple cars
- Central village location close to shops and bus services
- Generous living room and great dining room
- Large shower room
- Fabulous level rear garden with vegetable plots and flower beds.
- Well maintained condition with cosmetic updating required
- No onward chain !



It's the first time this spacious bungalow has been on the market for well over 50 years. A well-maintained and loved family home that is waiting for wonderful new owners to move into and love it just as much! In well-maintained condition and with bags of potential to extend or simply update, this is a rare opportunity indeed in the centre of this popular village. **NO ONWARD CHAIN!**