



ZAFER CETINEL POWERED BY **exp** TM UK

@ zafer.cetinel@exp.uk.com

zafercetinel.exp.uk.com

01242 374 844

Moonstone Grove, Bishops Cleeve, Cheltenham, GL52 7ZE

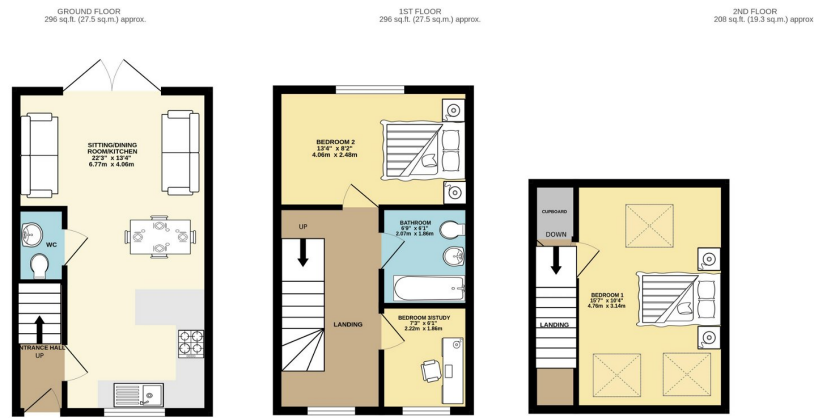
Offers Over £290,000

3 1 1





Modern three-bedroom house in Bishops Cleeve village with three floors. Ground floor: entrance hall, open plan lounge diner kitchen with patio doors to rear garden, downstairs toilet. First floor: two bedrooms, bathroom. Top floor: large master bedroom. Front garden, parking for two cars with EV charging point. Rear garden with patio, lawn, shed, gated rear access. Features double glazing, gas central heating, solar panels.



TOTAL FLOOR AREA: 799 sq.ft. (74.3 sq.m.) approx.
 Whilst every attempt has been made to ensure the accuracy of the floorplan contained here, measurements of doors, windows, rooms and any other items are approximate and no responsibility is taken for any error, omission or mis-statement. This plan is for illustrative purposes only and should be used as such by any prospective purchaser. The services, systems and appliances shown have not been tested and no guarantee as to their operability or efficiency can be given.
 Made with Metropix ©2024

