



ZAFER CETINEL POWERED BY **exp** TM UK

@ zafer.cetinel@exp.uk.com

zafercetinel.exp.uk.com

01242 374 844

# Oakland Avenue, Prestbury

Guide Price £435,000

3 1 2

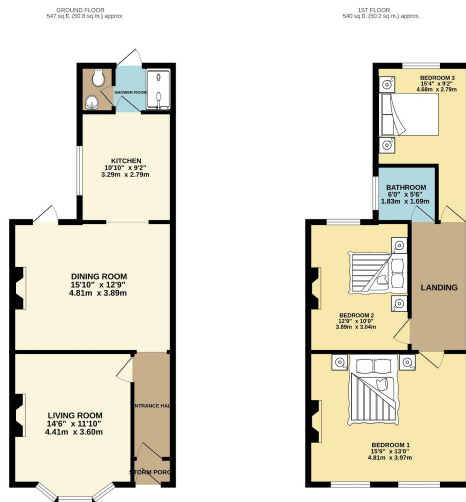


- OAKLAND AVENUE, PRESTBURY
- PERIOD PROPERTY IN NEED OF WORK
- THREE DOUBLE BEDROOMS
- TWO RECEPTION ROOMS
- OFF STREET PARKING
- CLOSE TO LOCAL AMENITIES
- GARDEN
- DOWNSTAIRS SHOWER AND WC
- QUIET CUL DE SAC LOCATION
- PLEASE QUOTE REF ZC 0364



This three bedroom Victorian period house is located in the highly sought after location of Prestbury, Cheltenham. It offers a spacious lounge, dining room with patio doors to the garden, kitchen, three double bedrooms, and a family bathroom. The property also features double glazing, gas central heating, off-road parking, and a rear garden. It presents a rare opportunity to own a property in a desirable location.

The property is located on Oakland Avenue providing easy access to the town centre. Nearby amenities include a medical center, various parks, and playing fields, along with a choice of schools, making it the perfect house for a family.



TOTAL FLOOR AREA: 1287 sqft (120.2 sq m) approx.  
 Measurements are taken to the internal face of walls and columns. All measurements are approximate and should not be used for legal purposes. The actual area may vary slightly from the above. All measurements are taken to the internal face of walls and columns. All measurements are approximate and should not be used for legal purposes. The actual area may vary slightly from the above. All measurements are taken to the internal face of walls and columns. All measurements are approximate and should not be used for legal purposes. The actual area may vary slightly from the above.

