



ZAFER CETINEL POWERED BY **exp** TM UK

@ zafer.cetinel@exp.uk.com

zafercetinel.exp.uk.com

01242 374 844



29 Cleevemount Road,  
Guide Price £435,000

🛏 3 🚽 1 🚗 2



- CLEEVEMOUNT ROAD, PITTVILLE & PRESTBURY
- AN EXTENDED BAY FRONTED SEMI DETACHED HOUSE
- CLOSE TO TOWN AND LOCAL AMENITIES
- GREAT SCHOOL CATCHMENT
- THREE BEDROOMS
- TWO RECEPTION ROOMS
- DOWNSTAIRS WC
- LARGE GARDEN
- APPROVED PLANNING PERMISSION FOR FURTHER EXTENSION
- PLEASE QUOTE REF ZC 0364



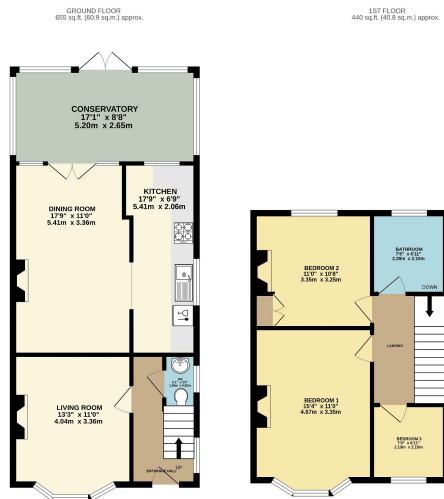




This three-bedroom 1950's extended semi-detached family home is located in the highly sought-after Pittville area of Cheltenham. The property features an approved planning permission for another single-story extension, offering further development potential.

On the ground floor, there is an entrance hall with a WC, a bay-fronted living room, a spacious dining room, a well-equipped kitchen, and a conservatory overlooking the rear garden. Upstairs, there are three bedrooms and a family bathroom.

Additional features include double glazing, gas-fired central heating, ample parking, and a beautiful rear garden. With its charm, modern extensions, and sought-after location, this property is perfect for families seeking a comfortable and versatile home.



TOTAL FLOOR AREA: 1095 sq.ft. (101.7 sq.m.) approx.  
 Whilst every attempt has been made to ensure the accuracy of the figures contained herein, the undersigned do not accept any liability for any errors or omissions, and the figures are intended as a guide only. The actual figures may vary slightly from those shown here. The undersigned do not accept any liability for any errors or omissions, and the figures are intended as a guide only. The actual figures may vary slightly from those shown here. The undersigned do not accept any liability for any errors or omissions, and the figures are intended as a guide only. The actual figures may vary slightly from those shown here.

