



ZAFER CETINEL POWERED BY **exp** TM UK

@ zafer.cetinel@exp.uk.com

zafercetinel.exp.uk.com

01242 374 844

# 42 Linden Avenue, Prestbury

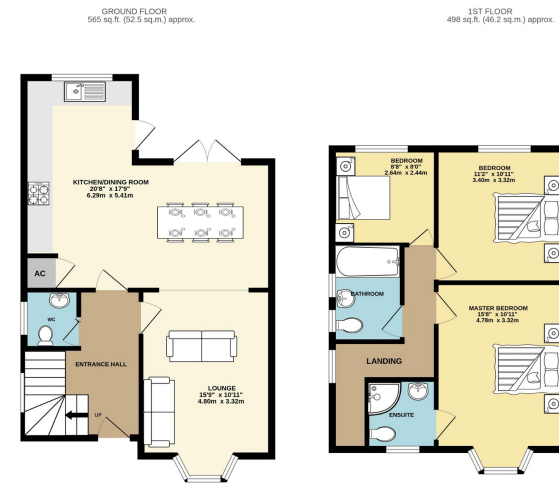
Guide Price £399,950

3 2 1



- PRESTBURY LOCATION
- EXTENDED SEMI DETACHED FAMILY HOME
- THREE DOUBLE BEDROOMS
- TWO BATHROOMS
- SHORT WALK TO PRESTBURY VILLAGE
- NEAR SHOP AND PUBS
- AMAZING SCHOOL CATCHMENT AREA
- NEAR BY WALKS INCLUDING RACECOURSE
- LARGE KITCHEN / DINER
- PLEASE QUOTE REF ZC 0364





42 Linden Avenue is a period semi-detached house that has undergone some improvements including the extension. You will be welcomed with an ample driveway to the front. Entering the house, you will find a well-proportioned entrance hall with stairs going up on your left-hand side, a door to the lounge with a bay window to the front, a downstairs cloakroom, and into amazing kitchen/diner with patio doors to the rear, providing lots of natural light. The layout will work well for entertaining guests or warm family time. The kitchen comes with some integrated appliances, and it forms the heart of the house. Upstairs there are three double bedrooms, a family bathroom, and an ensuite shower in the master bedroom. This well-positioned family home provides an excellent location for a young family with Outstanding, St Mary's School on your doorstep. Further benefits include double glazing, gas-fired

