



ZAFER CETINEL  
exp UK  
FOR SALE  
01242 374844  
www.exp.co.uk

ZAFER CETINEL

POWERED BY  
exp™ UK

@ zafer.cetinel@exp.uk.com

zafercetinel.exp.uk.com

01242 374 844

Bouncers Lane, Prestbury, Cheltenham, GL52 5JF

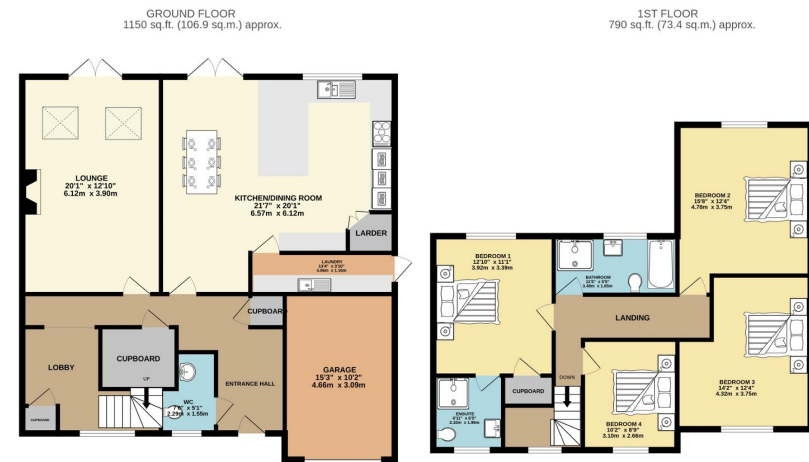
Guide Price £650,000

🛏️ 4 🚿 2 🚗 2



- BOUNCERS LANE, PRESTBURY VILLAGE
- AMAZING FAMILY AREA
- FOUR DOUBLE BEDROOMS
- STUNNING KITCHEN / DINER
- DRIVE WAY AND A GARAGE
- BEAUTIFULLY EXTENDED AND FINISHED
- GREAT SCHOOLS
- TWO BATHROOMS
- SOUTHWEST FACING GARDEN
- PLEASE QUOTE REF ZC 0364





TOTAL FLOOR AREA: 1941 sq.ft. (180.3 sq.m.) approx.  
 Whilst every attempt has been made to ensure the accuracy of the footprints contained here, measurements of doors, windows, rooms and any other items are approximate and no responsibility is taken for any error, omission or mis-statement. This plan is for illustrative purposes only and should be used as such by any prospective purchaser. The services, systems and appliances shown have not been tested and no guarantee as to their operability or efficiency can be given.  
 Made with Metropac ©2023

Nestled in the idyllic village of Prestbury, just on the outskirts of Cheltenham Town, 14 Bouncers Lane is a truly remarkable property that has been thoughtfully extended and enhanced by its owners over the years. The heart of the home lies in the beautiful new kitchen diner, which has been meticulously designed to cater to the needs of modern living. The kitchen showcases a large stone worktop, providing ample space for meal preparation, and is complemented by breakfast bars that comfortably seat four people. The integration of high-quality appliances, including double oven, microwave, coffee machine, and dishwasher, ensures that cooking and entertaining is a breeze. The kitchen also offers an abundance of cupboard space, walk in larder, allowing for easy organization and storage. Patio doors from the kitchen lead to the rear garden, providing a convenient and picturesque setting for al fresco

