



Mells Crescent, Mottingham, SE9

Guide Price £400,000

🛏️ 3 🚿 1 🚗 1

- Chain Free Sale
- Good Condition
- Large Garden
- Off Road Parking
- Ideal First Time Purchase Or Buy To Let Investment
- Three Bedrooms
- Modern Kitchen
- Quiet Road
- Excellent Transport Links Within Easy Reach
- Council Tax Band C - London Borough Of Bromley

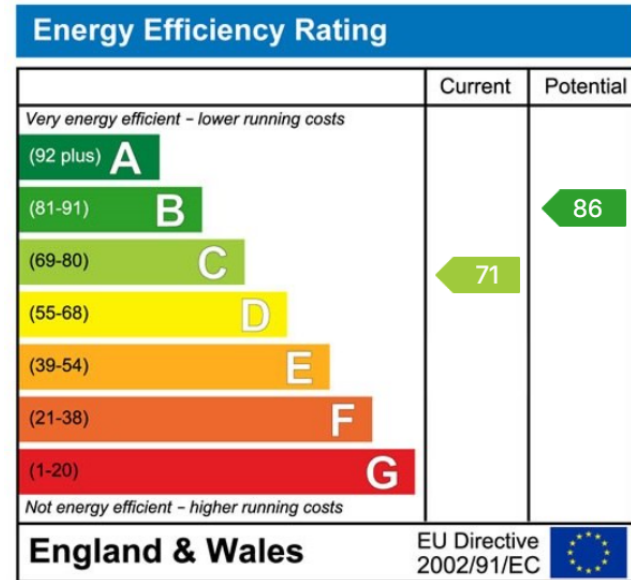
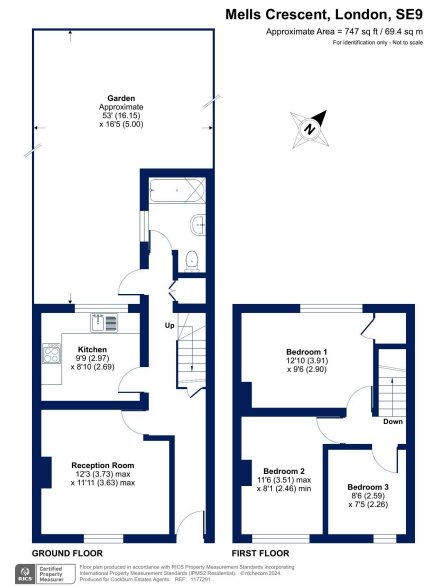


***** GUIDE PRICE £400,000 - £425,000 - CHAIN FREE *****

Situated on a quiet residential street near good schools and multiple transport links, this well presented family home must be seen to be fully appreciated.

Boasting a sizeable living room, modern fitted kitchen with some built in appliances, modified family bathroom, three bedrooms, off road parking and a large private mature garden to the rear, this property would make the perfect starter home and investment alike. Further benefits include updated wiring, gas central heating and double glazing throughout. Properties on Mells Crescent are always popular so we advise registering your interest straight away to avoid disappointment.





Cockburn EA
 352 Footscray Road,
 London, SE9 2EB
 t: 020 8859 8590