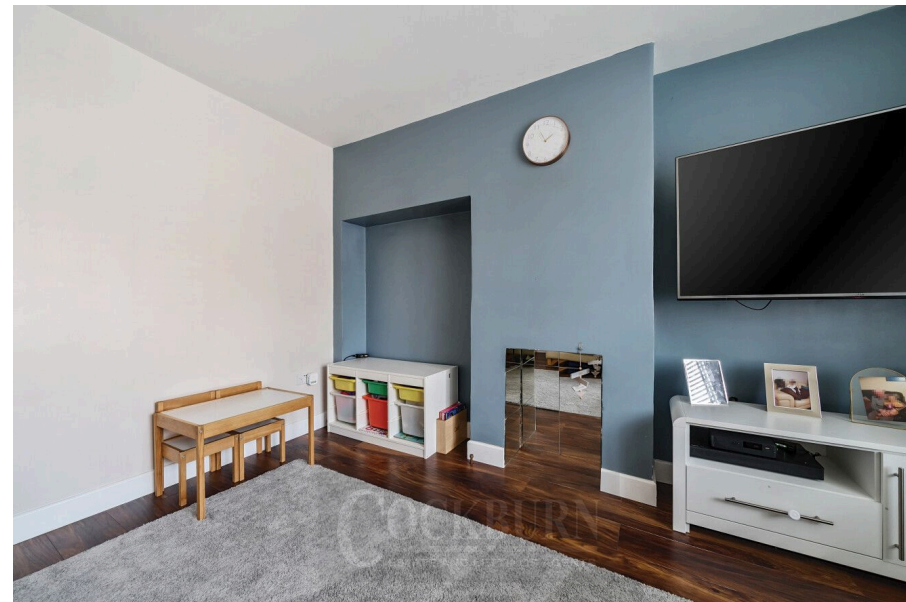




Prestbury Square, Mottingham, SE9

Guide Price £400,000

🛏️ 2 🚿 1 🚗 1

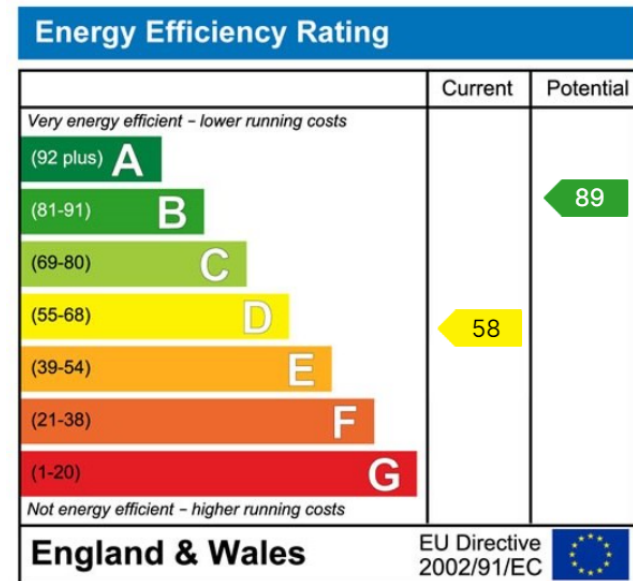
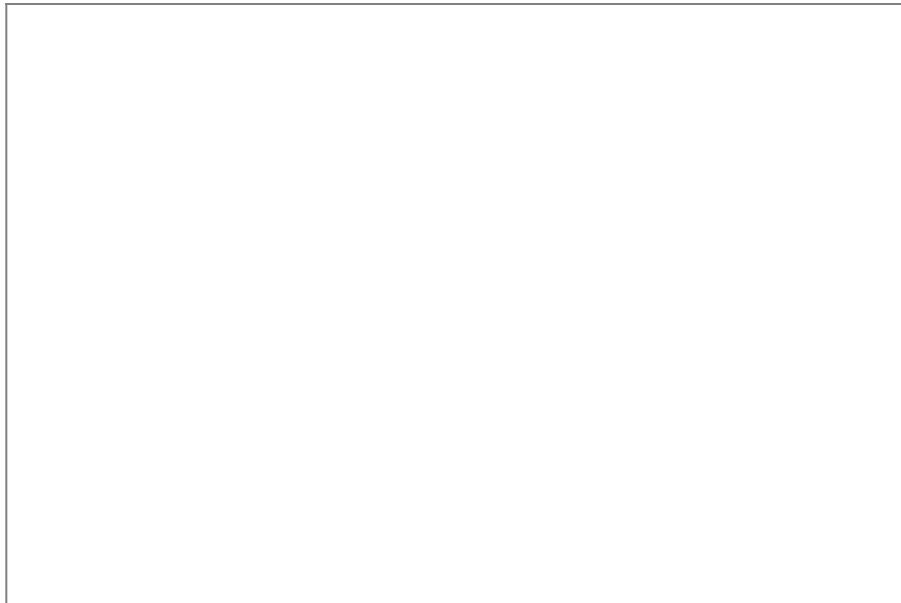


- Extended Two Bedroom Terraced House
- Large Reception Room
- Charming Well-Maintained Garden To Rear
- Off Street Parking
- Close To Both Mottingham Village & Chislehurst High Street
- Close to Elmstead Woods and Mottingham Stations & Within Easy Reach Of Bromley South
- Excellent Bus Links Keeping You Connected With Eltham, Bromley & Chislehurst
- Council Tax Band C - London Borough Of Bromley



***** GUIDE PRICE £400,000 - £425,000 *****

Charming Two Bedroom Extended Terraced Home in Mottingham, London



Cockburn EA

352 Footscray Road,
London, SE9 2EB

t: **020 8859 8590**