





## Milverton Way, Mottingham, SE9

Guide Price £300,000

🛏️ 2 🚿 1 🚗 1

- Chain Free Sale
- Two Double Bedrooms
- Ground Floor Maisonette
- Large Private Rear Garden
- Mottingham & New Eltham Railway Stations Within Easy Reach
- Close Proximity To Chislehurst High Street
- Well Renowned Montbelle Primary School Within Walking Distance
- Ideal First Time Purchase Or Buy To Let Investment
- EPC Rating D - Potential C
- Council Tax Band C - Royal Borough Of Greenwich



**\*\*\* GUIDE PRICE £300,000 - £325,000 - CHAIN FREE! \*\*\***

*Cockburn are excited to offer to the property market this wonderful two-bedroom ground floor maisonette, ideal for first time buyers and buy to let investors alike.*

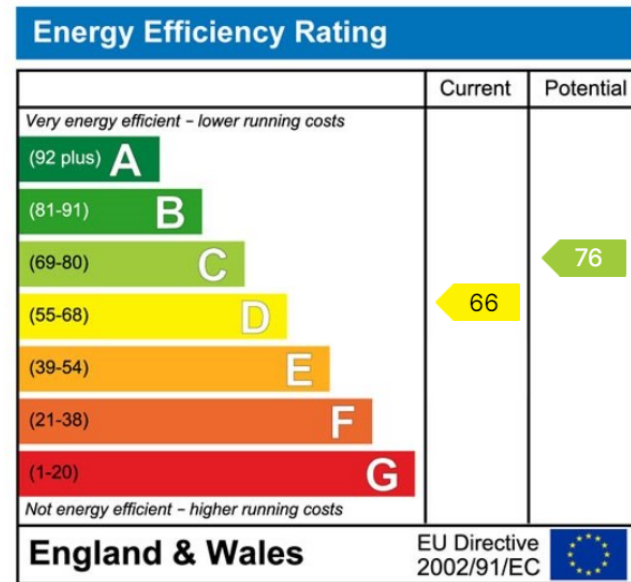
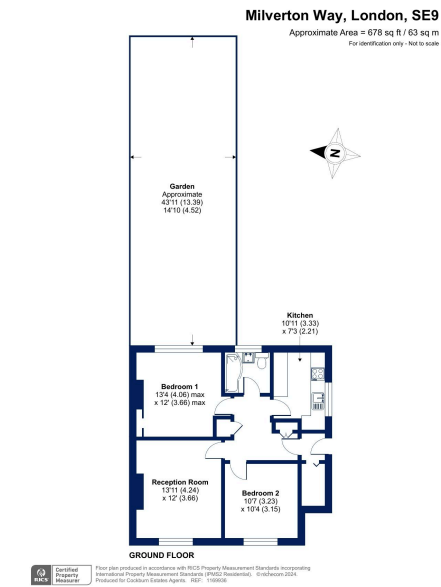
*Offering an abundance of space throughout, the property briefly comprises two double bedrooms, large reception room, fitted kitchen and family bathroom. The property comes with a generously sized private garden to the rear, with plentiful on-street parking.*

**Lease Length Lease: 89 Years | Service charge £915 Per Annum (Approx.)**









**Cockburn EA**  
 352 Footscray Road,  
 London, SE9 2EB  
 t: 020 8859 8590