



**COCKBURN**  
ESTATE AND LETTINGS AGENTS

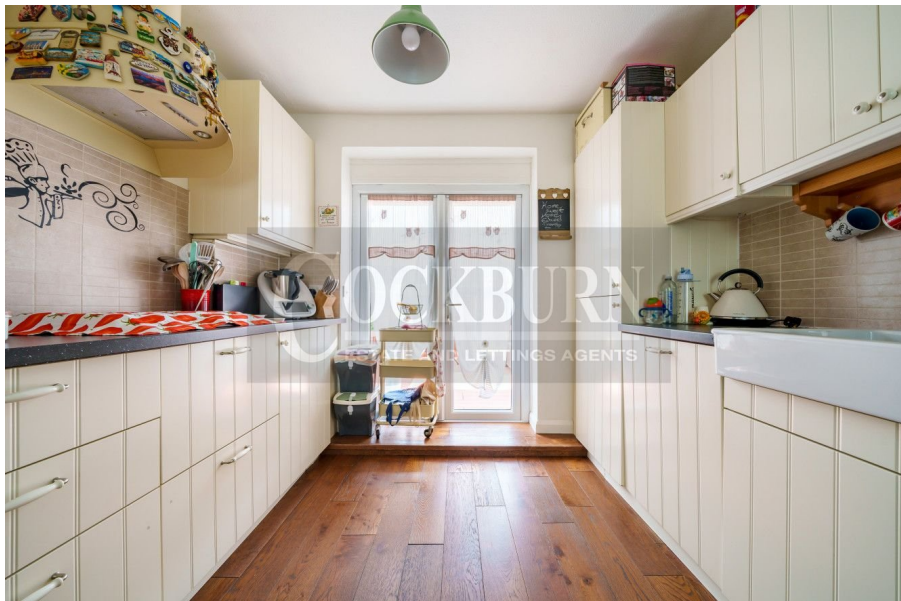
[cockburn-online.co.uk](http://cockburn-online.co.uk)

## Steyning Grove, Mottingham, SE9

Guide Price £400,000

3 1 1

- Chain Free Sale
- Open Plan Living Room/ Kitchen
- Fantastic Location
- Superb Nurseries & Schools Nearby
- Energy Rating D - Potential B
- Three Bedrooms
- Large Well Maintained Garden To Rear
- Excellent Transport Links For Those Needing To Commute
- Close Proximity To Local Amenities Incl Shops & Restaurants
- Council Tax Band C - Bromley London Borough Council



**\*\*\* CHAIN FREE \*\*\* GUIDE PRICE £400,000 - £425,000 \*\*\***

*Welcome to Steyning Grove - a delightful three-bedroom family home located in the sought-after area of Mottingham.*

*This inviting property offers a spacious open plan reception/ kitchen area, a beautifully maintained rear garden, family bathroom, three great sized bedrooms and an unbeatable location with convenient access to shops, schools, and excellent transport links. Perfect for families seeking comfort, convenience, and a warm atmosphere, this home is sure to impress.*



