



Sycamore Close, Mottingham, SE9

£200,000

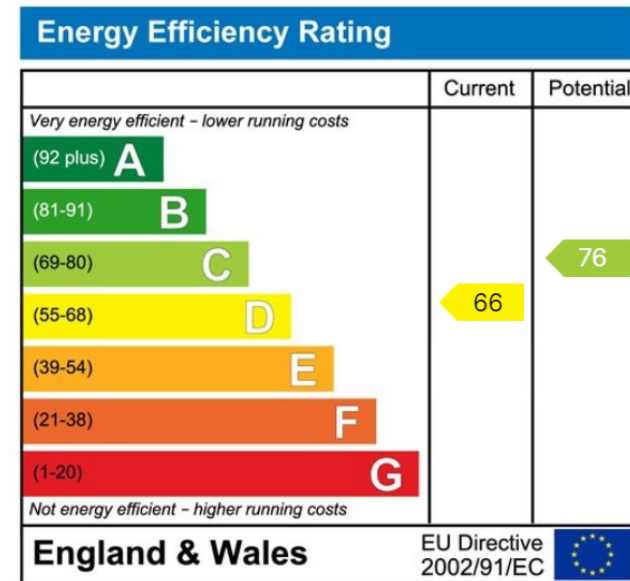
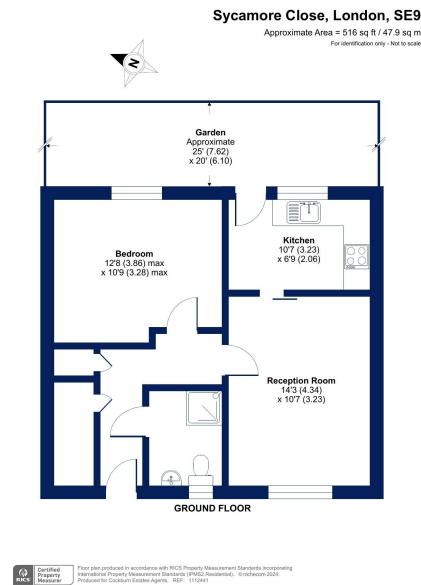
1 1 1



- Chain Free Sale
- Retirement Property - Over 55's Only
- One Bedroom Maisonette
- Private Garden
- Quiet Residential Estate
- Walking Distance To Mottingham Village Shops & Amenities
- Easy Reach Of Mottingham Railway Station & Bus Links
- Plentiful Parking
- EPC Rating D - Potential C
- Council Tax Band B - Royal Borough Of Greenwich



Cockburn present to the market this wonderful one bedroom ground floor maisonette, offered chain free for buyers over 55 years. Situated in a quiet private estate, this property boasts large reception room, kitchen, double bedroom and shower room. New owners will have the use of a private garden to the rear, perfect for those who enjoy gardening or enjoying company during the warmer months.



Cockburn EA
 352 Footscray Road,
 London, SE9 2EB
 t: 020 8859 8590