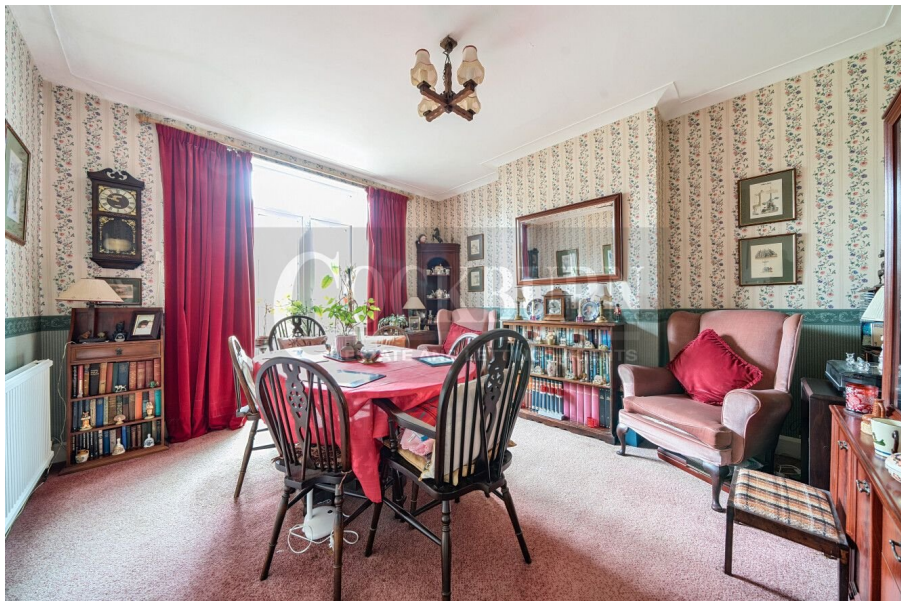




Le May Avenue, Grove Park, SE12

Guide Price £600,000

3 1 2

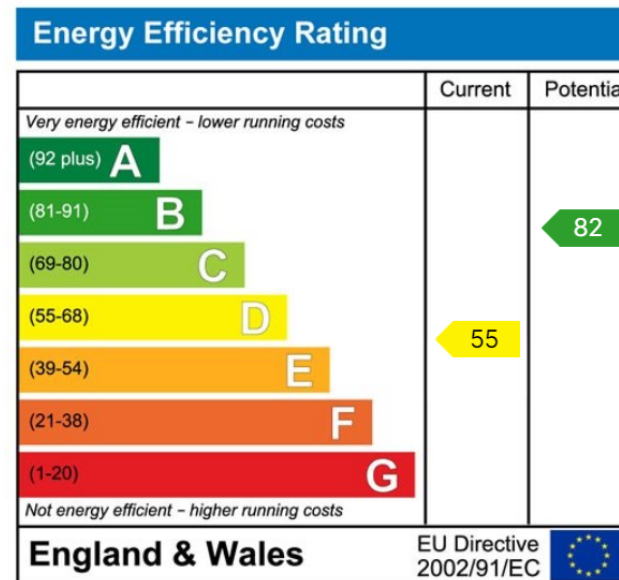
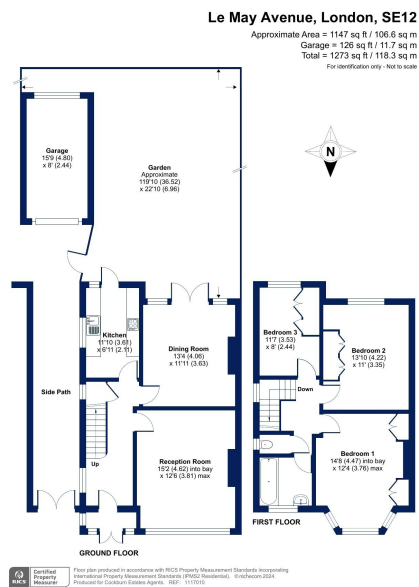


- Three Bedroom Semi-Detached Family Home
- Off Street Parking & Garage
- Well-Maintained Rear Garden
- Walking Distance To Grove Park Railway Station
- EPC Rating D - Potential B
- Two Reception Rooms
- Potential To Extend STPP
- Excellent Bus Links Keeping You Connected With Bromley, Eltham & Surrounding Areas
- Catchment Area For Highly Regarded Schools
- Council Tax Band E - London Borough Of Lewisham



*** GUIDE PRICE £600,000 - £625,000 ***

Located on the extremely popular tree-lined Le May Avenue, this semi detached home is ideal for the growing family.



Cockburn EA
 352 Footscray Road,
 London, SE9 2EB
 t: 020 8859 8590