



COCKBURN
ESTATE AND LETTINGS AGENTS

cockburn-online.co.uk

Dittisham Road, Mottingham, SE9

£425,000

🛏️ 4 🚿 2 🚗 1

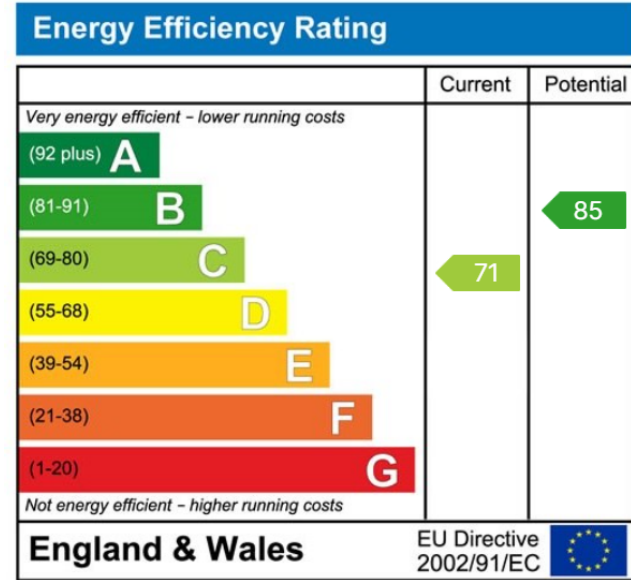
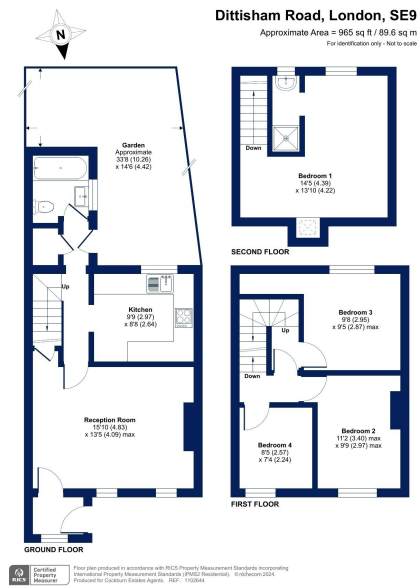


- Four Bedroom Terraced House
- Well Maintained Garden To Rear
- Off Street Parking
- Excellent Bus Links Keeping You Connected With Mottingham, Chislehurst & Bromley
- Large Living Area
- Loft Conversion
- Ideally Located For Elmstead Woods, Mottingham & Grove Park Railway Stations
- Perfect For First Time Buyers

• Banded Tax Band C - London Borough Of Bromley



Cockburn are excited to present to the market this wonderful four bedroom terraced family home on the ever popular Dittisham Road!



Cockburn EA
 352 Footscray Road,
 London, SE9 2EB
 t: 020 8859 8590